

RECEPTACLE

PLUG

UPDATE TITLE BLOCK EC NO: UCP2007-2415 DRAWN: DRWINAELHAG 2007/04/17 CHKD: CHKSCHMIDT 2007/05/03 APPR: FSM LTH 2007/05/03	QUALITY SYMBOLS ▽=0 ▽=0	GENERAL TOLERANCES (UNLESS SPECIFIED) <table border="1"> <tr> <th></th> <th>mm</th> <th>INCH</th> </tr> <tr> <td>4 PLACES ±</td> <td>---</td> <td>---</td> </tr> <tr> <td>3 PLACES ±</td> <td>---</td> <td>±.010</td> </tr> <tr> <td>2 PLACES ±</td> <td>0.25</td> <td>±.014</td> </tr> <tr> <td>1 PLACE ±</td> <td>0.35</td> <td>---</td> </tr> </table>		mm	INCH	4 PLACES ±	---	---	3 PLACES ±	---	±.010	2 PLACES ±	0.25	±.014	1 PLACE ±	0.35	---	DIMENSION STYLE IN/MM	SCALE 2:1	DESIGN UNITS INCH	THIRD ANGLE PROJECTION
		mm	INCH																		
	4 PLACES ±	---	---																		
	3 PLACES ±	---	±.010																		
2 PLACES ±	0.25	±.014																			
1 PLACE ±	0.35	---																			
DRAWN BY KBW	DATE 01/14/1989	TITLE .093/(2.36) HOUSINGS PLUG & RECEPTACLE 15 CIRCUIT .198/(5.03)CL																			
CHECKED BY RW	DATE 01/14/1989	MOLEX INCORPORATED																			
APPROVED BY RAS	DATE 01/14/1989	MATERIAL NO. SEE CHART	DOCUMENT NO. SD-1375-*	SHEET NO. 1 OF 2																	

DRAFT WHERE APPLICABLE
MUST REMAIN
WITHIN DIMENSIONS

THIS DRAWING CONTAINS INFORMATION THAT IS PROPRIETARY TO MOLEX INCORPORATED AND SHOULD NOT BE USED WITHOUT WRITTEN PERMISSION

PLUG			RECEPTACLE		
ORDER NO	ENG NO	PACKAGING	ORDER NO	ENG NO	PACKAGING
03-09-2151	1375-P	PK-1375-001	03-09-1151	1375-R	PK-1375-001
03-09-2159	1375-P4	PK-1375-002	03-09-1152	1375-R1	PK-1375-001
03-09-2158	1375-P7	PK-1375-001	03-09-1154	1375-R6	PK-1375-001
03-09-7158	1375-P7BK	PK-1375-001	03-09-1157	1375-R6-1	PK-1375-001
			03-09-6154	1375-R6BK	PK-1375-001
			03-09-1153	1375-R2	PK-1375-001

LEGEND FOR PLUG:

1375-P***

OPTIONS: _____

BLANK = W/O EARS, W/ PULL TABS, W/O LOCK WINDOWS
 2 = W/ STANDARD EARS, W/O PULL TABS, W/O LOCK WINDOWS
 4 = W/ PREBENT EARS, W/O PULL TABS, W/ LOCK WINDOWS
 6 = W/O EARS, W/O PULL TABS, W/ LOCK WINDOWS
 7 = W/O EARS, W/ PULL TABS, W/ LOCK WINDOWS
 8 = W/ PREBENT EARS, W/O PULL TABS, W/O LOCK WINDOWS

COLOR: _____

BLANK = NATURAL COLOR
 AM = AMBER BK = BLACK BU = BLUE
 BN = BROWN GY = GRAY GN = GREEN
 OR = ORANGE RD = RED YW = YELLOW

LEGEND FOR RECEPTACLE:

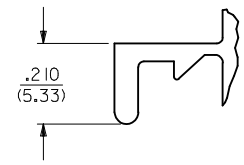
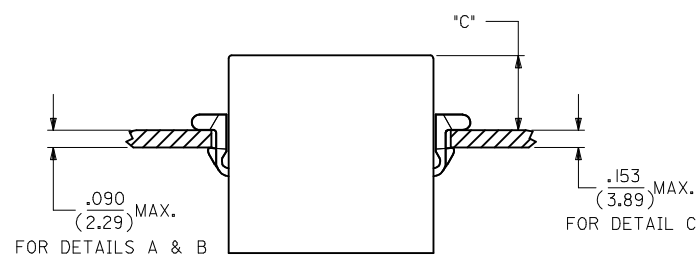
1375-R***

OPTIONS: _____

BLANK = W/ PREBENT EARS, W/O LOCK RAMPS
 1 = W/O EARS, W/O LOCK RAMPS
 2 = W/PREBENT EARS, W/LOCK RAMPS
 6 = W/ STANDARD EARS & LOCK RAMPS
 6-1 = W/O EARS, W/ LOCK RAMPS

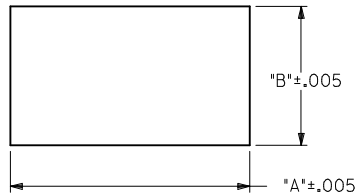
COLOR: _____

BLANK = NATURAL COLOR
 AM = AMBER BK = BLACK BU = BLUE
 BN = BROWN GY = GRAY GN = GREEN
 OR = ORANGE RD = RED YW = YELLOW



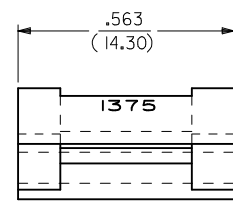
DETAIL A

.093/(2.36) STANDARD MOUNTING EAR (SCALE 4:1)



RECOMMENDED PANEL OPENING

HOUSING	DIM. "A"	DIM. "B"	*C* PREBENT EAR	*C* STANDARD EAR	*C* SPECIAL EAR
PLUG	1.343/(34.11)	.760/(19.30)	.40/(10.2)	.36/(9.1)	—
RECEPT. W/ RAMPS	1.240/(31.50)	.725/(18.42)	.41/(10.4)	.37/(9.4)	.31/(7.8)
RECEPT. W/O RAMPS	1.240/(31.50)	.655/(16.64)	.41/(10.4)	.37/(9.4)	.31/(7.8)



DETAIL B

.093/(2.36) PREBENT MOUNTING EAR (SCALE 4:1)

NOTES :

- MATERIAL : NYLON TYPE 6/6, 94V-2.
- FINISH : NONE.
- PRODUCT SPECIFICATION : PS-02-09.
- PACKAGING INFORMATION : SEE CHART.
- ETCHED CIRCUIT I.D. NUMBERS ON SIDE OF HOUSINGS TO BE PRESENT ON PARTS FROM TOOLS BUILT AFTER 2/28/94.
- PARTS CONFORM TO CLASS B REQUIREMENTS OF COSMETIC SPECIFICATION PS-45499-002.

ADD 1375-R2 EC NO: UCP2013-5222 DRWN: AELHAG 2013/06/06 CHKD: JEBLL 2013/06/06 APPR: FSMITH 2013/06/10	QUALITY SYMBOLS ▽=0 ▽=0	GENERAL TOLERANCES (UNLESS SPECIFIED)		DIMENSION STYLE IN/MM		SCALE 1:1	DESIGN UNITS INCH	THIRD ANGLE PROJECTION		
		4 PLACES ± --- ± --- 3 PLACES ± --- ± .010 2 PLACES ± 0.25 ± .014 1 PLACE ± 0.35 ± ---	mm INCH DRAWN BY KBW DATE 6/14/1989 CHECKED BY RW DATE 6/14/1989 APPROVED BY RAS DATE 6/14/1989	.093/(2.36) HOUSINGS PLUG & RECEPTACLE 15 CIRCUIT .198/(5.03) CL MOLEX INCORPORATED				MATERIAL NO. SEE CHART	DOCUMENT NO. SD-1375-*	SHEET NO. 2 OF 2
		DRAFT WHERE APPLICABLE MUST REMAIN WITHIN DIMENSIONS						THIS DRAWING CONTAINS INFORMATION THAT IS PROPRIETARY TO MOLEX INCORPORATED AND SHOULD NOT BE USED WITHOUT WRITTEN PERMISSION		