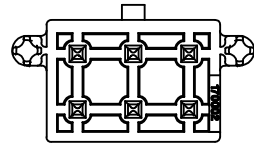
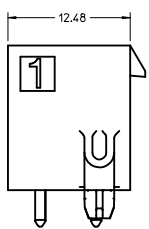
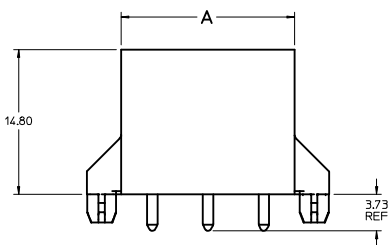
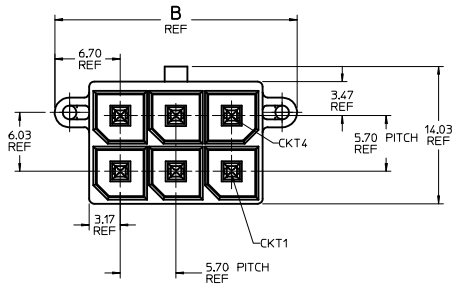


76829-0006 SHOWN



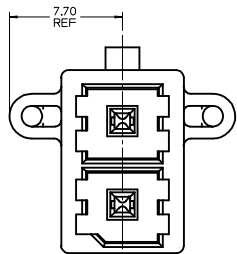
CKT SIZE	PART NO.	PLATING	DIM A	DIM B	DIM C BASIC	DIM D
2	X 76829-0002	TIN	8.35	15.39	12.34	16.39
4	X 76829-0004	TIN	12.05	19.10	16.04	20.10
6	X 76829-0006	TIN	17.75	24.80	21.74	25.80
8	X 76829-0008	TIN	23.45	30.50	27.44	31.50
10	X 76829-0010	TIN	29.15	36.20	33.14	37.20
12	X 76829-0012	TIN	34.85	41.90	38.84	42.90
2	172065-0002	15 GOLD	8.35	15.39	12.34	16.39
4	172065-0004	15 GOLD	12.05	19.10	16.04	20.10
6	172065-0006	15 GOLD	17.75	24.80	21.74	25.80
8	172065-0008	15 GOLD	23.45	30.50	27.44	31.50
10	172065-0010	15 GOLD	29.15	36.20	33.14	37.20
12	172065-0012	15 GOLD	34.85	41.90	38.84	42.90
2	172065-1002	30 GOLD	8.35	15.39	12.34	16.39
4	172065-1004	30 GOLD	12.05	19.10	16.04	20.10
6	172065-1006	30 GOLD	17.75	24.80	21.74	25.80
8	172065-1008	30 GOLD	23.45	30.50	27.44	31.50
10	172065-1010	30 GOLD	29.15	36.20	33.14	37.20
12	172065-1012	30 GOLD	34.85	41.90	38.84	42.90

X = NOT RELEASED

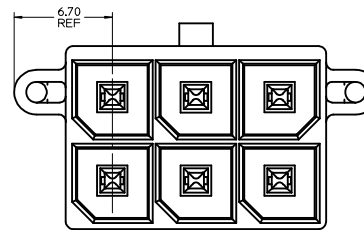
NOTES:

- MATERIAL:
HOUSING LCP, UL94V-0, BLACK.
TERMINAL: HIGH CONDUCTIVITY COPPER.
- TERMINAL PLATING:
(TIN) 1.52 MICROMETER /(60 MICROINCH) MIN REFLOWED MATTE TIN OVER
1.27 MICROMETER /(50 MICROINCH) MIN NICKEL OVERALL.
(15 GOLD) 0.38 MICROMETER /(15 MICROINCH) MIN SELECT GOLD ON CONTACT AREA
2.54 MICROMETER /(100 MICROINCH) MIN SELECT MATTE TIN ON SOLDER AREA
BOTH OVER 1.27 MICROMETER /(50 MICROINCH) MIN NICKEL OVERALL
(30 GOLD) 0.76 MICROMETER /(30 MICROINCH) MIN SELECT GOLD ON CONTACT AREA
2.54 MICROMETER /(100 MICROINCH) MIN SELECT MATTE TIN ON SOLDER AREA
BOTH OVER 1.27 MICROMETER /(50 MICROINCH) MIN NICKEL OVERALL
- PRODUCT SPECIFICATION PS-76823-100.
- PART MATES WITH MOLEX PART NUMBER 170001 AND 171692 SERIES.
- PACKAGING: TRAY PACKED PER MOLEX SPECIFICATION PK-31301-976.
- PARTS CONFORM TO CLASS "B" REQUIREMENTS OF COSMETIC SPECIFICATION PS-45499-002.
- DISCOLORATION IN THE BANDOLIER CARRIER AREA OF THE PIN IS INHERENT TO THE PLATING PROCESS AND IS DUE TO THE MASKING EFFECT OF THE CARRIER. THIS DISCOLORATION IS IN A NON-FUNCTIONAL AREA OF THE PIN AND WILL NOT AFFECT THE PERFORMANCE OF THE HEADER ASSEMBLY.

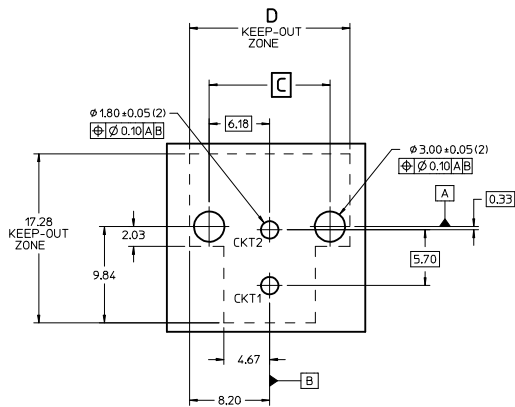
CORRECT 3.73 DIM EEC NO: UCP2014-1915 DRAWN BY: DRAVANGAVEN 2013/10/31 CHKD: BEL 2013/10/31 APPROVED BY: APPR: SMITH 2013/11/18 D2	QUALITY SYMBOLS ∇=0 ∇=0 ∇=0	GENERAL TOLERANCES (UNLESS SPECIFIED) <table border="1"> <tr><th></th><th>mm</th><th>INCH</th></tr> <tr><td>4 PLACES</td><td>±---</td><td>±---</td></tr> <tr><td>3 PLACES</td><td>±---</td><td>±---</td></tr> <tr><td>2 PLACES</td><td>±0.25</td><td>±---</td></tr> <tr><td>1 PLACE</td><td>±---</td><td>±---</td></tr> <tr><td>0 PLACE</td><td>±</td><td>±</td></tr> </table> ANGULAR ±1/2° DRAFT WHERE APPLICABLE MUST REMAIN WITHIN DIMENSIONS		mm	INCH	4 PLACES	±---	±---	3 PLACES	±---	±---	2 PLACES	±0.25	±---	1 PLACE	±---	±---	0 PLACE	±	±	DIMENSION STYLE MM ONLY DRAWN BY: MKARADI MAS CHECKED BY: APATEL APPROVED BY: APATEL DATE: 2010/10/06 DATE: 2010/10/06 DATE: 2012/06/13	SCALE: 4:1 DESIGN UNITS: METRIC THIRD ANGLE PROJECTION	TITLE: MEGA-FIT VERTICAL HEADER ASSY 2-12 CKT TOP LATCH molex	MATERIAL NO: SEE CHART DOCUMENT NO: SD-76829-0100 SHEET NO: 1 OF 2
		mm	INCH																					
	4 PLACES	±---	±---																					
3 PLACES	±---	±---																						
2 PLACES	±0.25	±---																						
1 PLACE	±---	±---																						
0 PLACE	±	±																						
THIS DRAWING CONTAINS INFORMATION THAT IS PROPRIETARY TO MOLEX INCORPORATED AND SHOULD NOT BE USED WITHOUT WRITTEN PERMISSION																								
SIZE D																								



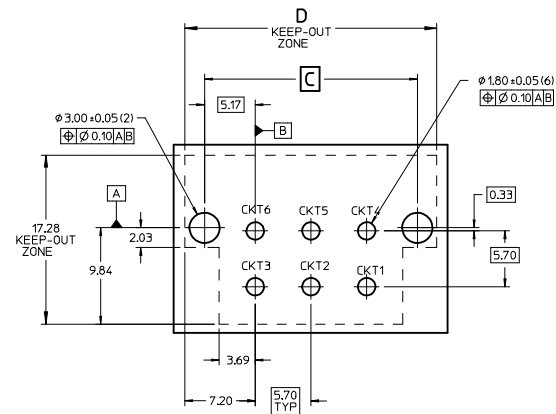
2 CTK



4-12 CTK



PCB LAYOUT: COMPONENT SIDE
RECOMMENDED PCB THICKNESS: 1.58 MM/.062 IN TO 2.36 MM/.093 IN



PCB LAYOUT: COMPONENT SIDE
RECOMMENDED PCB THICKNESS: 1.58 MM/.062 IN TO 2.36 MM/.093 IN

SEE SHT 1 SEC NO: UCP2014-1915 2013/10/31 DORNAN/GOVEN 2013/10/31 CHYD.BELL 2013/11/18 APPRE/SMITH	QUALITY SYMBOLS	GENERAL TOLERANCES (UNLESS SPECIFIED)	DIMENSION STYLE	SCALE	DESIGN UNITS	THIRD ANGLE PROJECTION
	$\nabla=0$	mm	MM ONLY	4:1	METRIC	
	$\nabla=0$	INCH				
	$\nabla=0$	ANGULAR $\pm 1/2^\circ$				
	DRAFT WHERE APPLICABLE MUST REMAIN WITHIN DIMENSIONS	4 PLACES $\pm .005$ 3 PLACES $\pm .0025$ 2 PLACES $\pm .01$ 1 PLACE $\pm .015$ 0 PLACE $\pm .02$	DRAWN BY: MKARADIMAS CHECKED BY: APATEL APPROVED BY: APATEL DATE: 2010/10/06 DATE: 2010/10/06 DATE: 2012/06/13	TITLE	MEGA-FIT VERTICAL HEADER ASSY 2-12 CTK TOP LATCH molex	
			SEE CHART	MATERIAL NO.	DOCUMENT NO.	SHEET NO.
					SD-76829-0100	2 OF 2