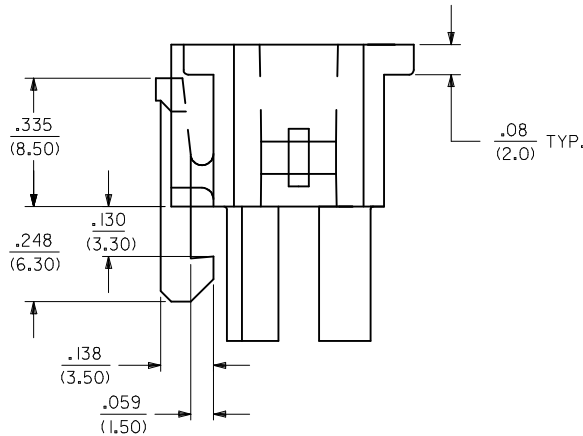
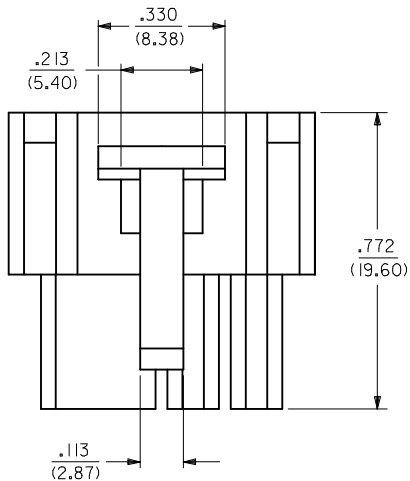
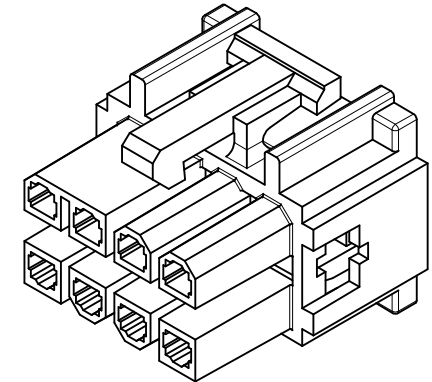
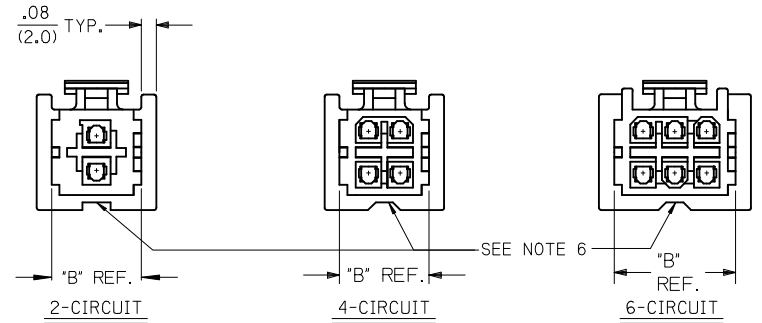
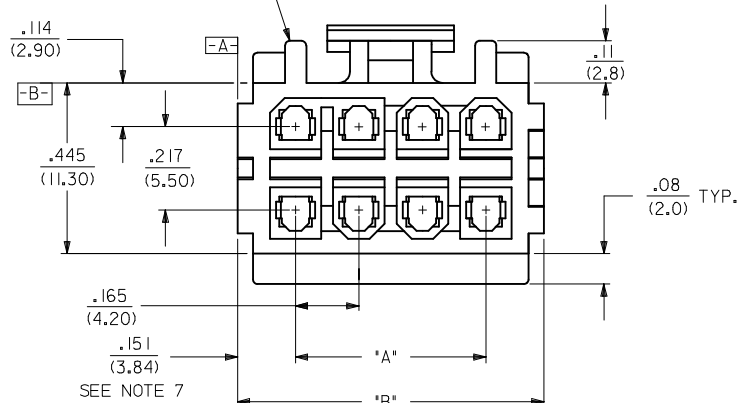


PROTECTIVE SIDES AVAILABLE ON ALL CIRCUITS EXCEPT TWO AND FOUR CIRCUITS.

SEE NOTE 8



PROTECTIVE SIDES AVAILABLE ON ALL CIRCUITS EXCEPT TWO AND FOUR CIRCUITS.

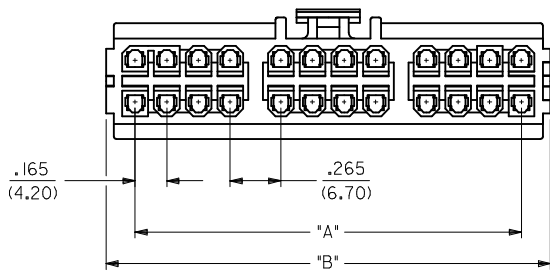


NOTES:

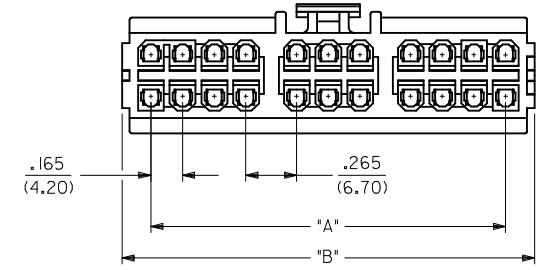
1. MATERIAL: UNFILLED POLYESTER, U.L. 94V-0. HOUSING COLOR: SEE CHART
2. FINISH: N/A
3. PRODUCT SPECIFICATION: PS-5556-003
4. PACKAGING SPECIFICATION: PK-30067-001.
5. HOUSING TO BE USED WITH TERMINAL #5556. AND T.P.A. LOCK #30072-*. RECEPTACLE HOUSING TO MATE WITH PLUG HOUSING #30068, ST. HEADER #30069, AND RT. ANGLE HEADERS #30070 & #44483. HOUSING ACCEPTS CONNECTOR POSITIONING ASSURANCE (C.P.A.) LOCK #30071.
6. RELIEF NOTCH IS OPTIONAL AND MAY OR MAY NOT APPEAR ON 2, 4, 6, 10 & 12 CIRCUIT HOUSINGS ONLY.
7. FOR 2 CKT HOUSING, DIMENSION IS .231/5.88
8. FOR 2 & 4 CKT HOUSINGS, DIMENSION IS .070/1.78
9. THIS PART CONFORMS TO CLASS B REQUIREMENTS OF COSMETIC SPEC PS-45499-002.
10. CHAMFERS ARE OPTIONAL AND MAY OR MAY NOT BE PRESENT ON 16 CIRCUIT HOUSINGS.

FIX NOTE 10 EC NO: UCP2014-0298 DRAWING: DRW:NGUYEN 2013/07/22 CHKD: BELLS 2013/07/22 APPR: FSMITH 2013/08/16	QUALITY SYMBOLS 	GENERAL TOLERANCES (UNLESS SPECIFIED)		DIMENSION STYLE IN/MM	SCALE 4:1	DESIGN UNITS INCH	THIRD ANGLE PROJECTION
		4 PLACES ± --- ± --- 3 PLACES ± --- ± .010 2 PLACES ± 0.25 ± .014 1 PLACE ± 0.36 ± --- 0 PLACE ± ±	mm INCH ± --- ± --- ± .010 ± .014 ± --- ± --- ± ±	DRAWN BY RJF DATE 09/23/91	TITLE 2-24 CKT. RECPT. HSG. MINI-FIT T.P.A. SERIES	MATERIAL NO. SD-30067-*	SHEET NO. 1 OF 2
		ANGULAR ±1/2°	DRAFT WHERE APPLICABLE MUST REMAIN WITHIN DIMENSIONS	CHECKED BY GEP DATE 09/23/91	APPROVED BY FSMITH DATE 2010/10/25	DOCUMENT NO.	THIS DRAWING CONTAINS INFORMATION THAT IS PROPRIETARY TO MOLEX INCORPORATED AND SHOULD NOT BE USED WITHOUT WRITTEN PERMISSION
	H2	REV	SIZE C	SEE CHART	SD-30067-*	1 OF 2	MOLEX

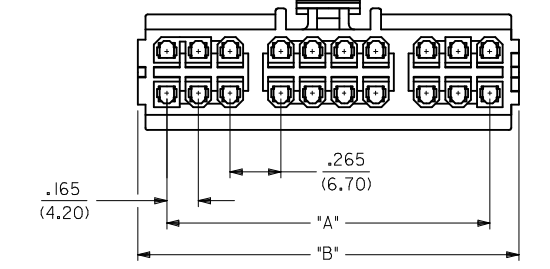
	13	12	11	10	9	8	7	6	5	4	3	2	1
	BLACK			NATURAL									
J	CKT. SIZE	ENG. NO.	EDP. NO.	ENG. NO.	EDP. NO.	DIM. "A"	DIM. "B"						
	02	30067-02A2	I5-97-502I	30067-0212	30067-0212	—	.467 (11.86)						
	04	30067-04A2	I5-97-504I	30067-0412	30067-0412	.165 (4.20)	.467 (11.86)						
I	06	30067-06A2	I5-97-506I	30067-0612	30067-0612	.331 (8.40)	.633 (16.08)						
	08	30067-08A2	I5-97-508I	30067-0812	30067-0812	.496 (12.60)	.798 (20.27)						
	10	30067-10A2	I5-97-510I	30067-1012	30067-1012	.661 (16.80)	.963 (24.46)						
H	12	30067-12A2	I5-97-512I	30067-1212	30067-1212	.827 (21.00)	1.129 (28.68)						
	14	30067-14A2	NOT TOOLED	30067-1412	NOT TOOLED	.992 (25.20)	1.294 (32.87)						
	16	30067-16A2	I5-97-516I	30067-1612	30067-1612	1.157 (29.40)	1.459 (37.06)						
G	18	30067-18A2	NOT TOOLED	30067-1812	NOT TOOLED	1.520 (38.60)	1.822 (46.28)						
	20	30067-20A2	NOT TOOLED	30067-2012	NOT TOOLED	1.685 (42.80)	1.987 (50.46)						
	22	30067-22A2	NOT TOOLED	30067-2212	NOT TOOLED	1.850 (47.00)	2.152 (54.66)						
F	24	30067-24A2	NOT TOOLED	30067-2412	NOT TOOLED	2.016 (51.20)	2.318 (58.88)						



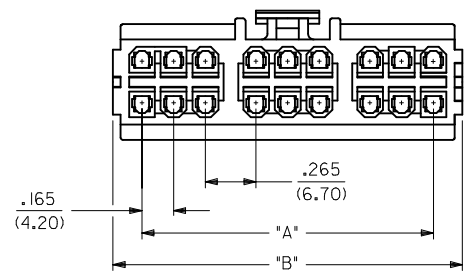
24 CIRCUIT



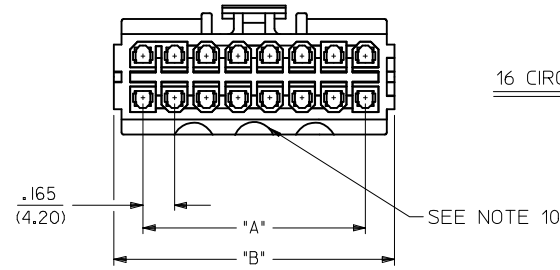
22 CIRCUIT



20 CIRCUIT



18 CIRCUIT



16 CIRCUITS

LEGEND:

30067 - ** * 2

CIRCUIT SIZE (02-24)

HOUSING COLOR
A = BLACK
1 = NATURAL

SEE SHEET 1 EC NO: UCP2014-0298 DRAWN: NGUYEN 2013/07/22 CHKD: J.BELL 2013/07/22 APPR: F.SMITH 2013/08/16	QUALITY SYMBOLS	GENERAL TOLERANCES (UNLESS SPECIFIED)	DIMENSION STYLE IN/MM	SCALE 2:1	DESIGN UNITS INCH	THIRD ANGLE PROJECTION
	▽=0	4 PLACES ± --- ± ---	DRAWN BY RJF	DATE 09/23/91	TITLE 2-24 CKT. RECP. HSG. MINI-FIT T.P.A. SERIES	
	▽=0	3 PLACES ± --- ± .010	CHECKED BY GEP	DATE 09/23/91		
	▽=0	2 PLACES ± 0.25 ± .014	APPROVED BY FSMITH	DATE 2010/10/25		
		1 PLACE ± 0.36 ± ---	MATERIAL NO.	DOCUMENT NO.	SHEET NO. 2 OF 2	
		0 PLACE ± ±	SEE CHART SD-30067-*			
DRAFT WHERE APPLICABLE MUST REMAIN WITHIN DIMENSIONS		THIS DRAWING CONTAINS INFORMATION THAT IS PROPRIETARY TO MOLEX INCORPORATED AND SHOULD NOT BE USED WITHOUT WRITTEN PERMISSION				