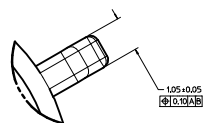
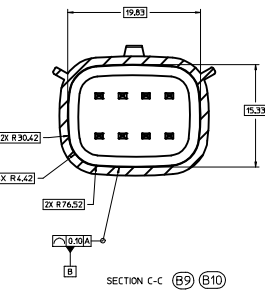
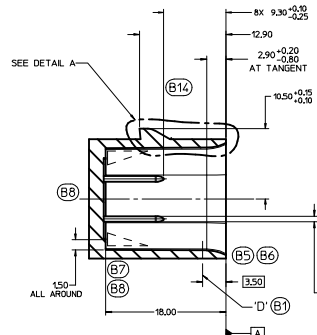
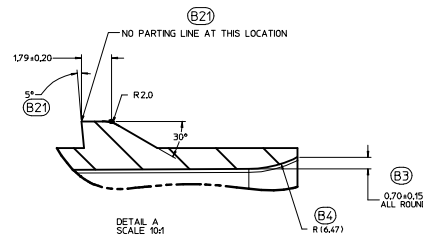
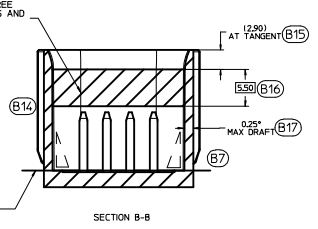
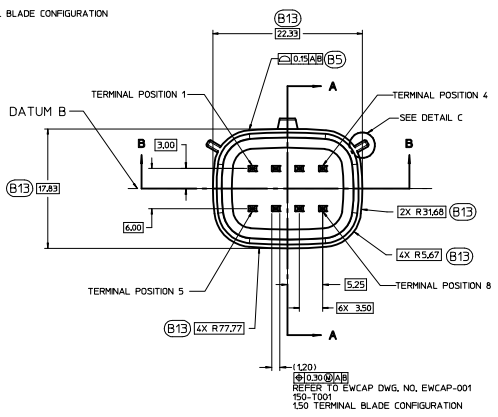
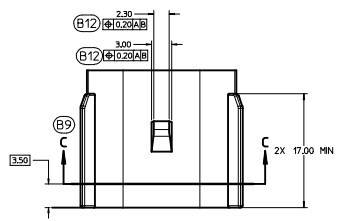
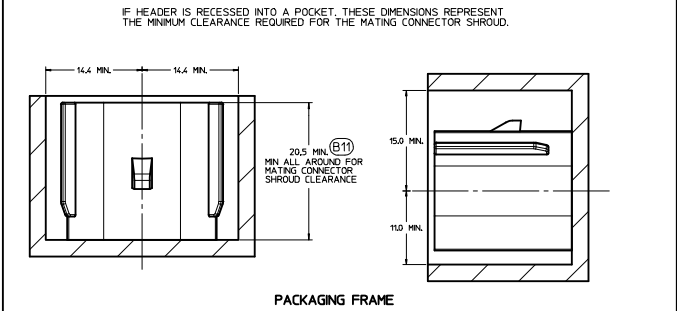


150-S-008-2-002	D	BLACK
150-S-008-2-002	C	DK GRAY
150-S-008-2-802	B	LT GRAY
150-S-008-2-A02	A	BLACK



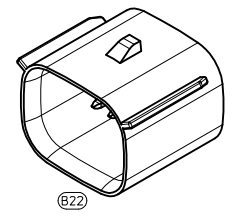
DETAIL C SCALE 20:1 APPLIES TO ALL KEYING OPTIONS REFER TO KEYING OPTION VIEWS FOR POSITIONS

CONSTRUCTION BELOW THIS SURFACE IS NOT CONTROLLED BY EWCAP. NO PLASTIC FEATURES MAY EXTEND ABOVE THIS SURFACE.



NOTICE
THIS DRAWING OR PORTIONS OF IT, ARE CONTROLLED BY THE ELECTRICAL WIRING COMPONENTS APPLICATION PARTNERSHIP (EWCAP), A SUBGROUP OF THE UNITED STATES CONSORTIUM FOR AUTOMOTIVE RESEARCH LLC (USCAR). USCAR IS A PARTNERSHIP BETWEEN CHRYSLER GROUP LLC, FORD MOTOR COMPANY, AND GENERAL MOTORS CORPORATION ANY CHANGE TO A EWCAP CONTROLLED PORTION OF THIS DRAWING, INCLUDING A "RECORD CHANGE" MUST BE APPROVED, IN WRITING, BY THE RESPONSIBLE EWCAP MEMBER FROM EACH USCAR COMPANY. EACH EWCAP MEMBER AUTHORIZED TO SIGN FOR HIS OR HER COMPANY IS RESPONSIBLE FOR OBTAINING ALL NECESSARY APPROVALS WITHIN THAT COMPANY PRIOR TO SIGNING FOR APPROVAL OF THE CHANGE. EWCAP EXPRESSLY PROHIBITS ANY PARTY FROM CHANGING EITHER ANY EWCAP CONTROLLED PORTION OF THIS DRAWING OR ANY ASSOCIATED TOOLING BEFORE RECEIVING AN APPROVAL SIGNED BY AN AUTHORIZED REPRESENTATIVE FROM EACH EWCAP PARTNER. REFERENCE TO THE SIGNED APPROVAL FORM MUST BE ENTERED IN THIS DRAWING'S CONTROL COLUMN.

- NOTES: UNLESS OTHERWISE SPECIFIED (B18)
- ALL DIMENSIONS SHOWN IN MILLIMETERS.
 - DIMENSIONING AND TOLERANCING PER ASME Y14.5M-1994
 - 0.25 RADI ON ALL CORNERS SHOWN SHARP.
 - UNSPECIFIED RADI: 0.25 EXCEPT AS NOTED.
 - STANDARD COLORS FOR POLARIZATION (SEE CHART). DEVIATION REQUIRES APPROVAL OF AUTHORIZED PERSON.
 - REFER TO "SAE/USCAR 12 CONNECTOR GUIDELINES" FOR ADDITIONAL REQUIREMENTS.
 - EXCEPT WHERE NOTED, DRAFT ON OUTSIDE SURFACES IS PERMISSIBLE WITHIN TOLERANCE.
 - SYMBOL INDICATES DRAFT DIRECTION.
 - FOR TERMINAL MATERIAL DIMENSIONAL AND COATING REQUIREMENTS AND ANY BLADE TERMINAL DESIGN INFORMATION NOT SHOWN ON THIS DRAWING SEE EWCAP DRW. NO. EWCAP-001
 - A FULL SHROUD ON THE MATING CONNECTOR IS REQUIRED TO INSURE THAT THE CONNECTOR-HEADER POLARIZATION FEATURES OPTIONS A THRU D WILL FUNCTION. THE FULL SHROUD ALSO PREVENTS SCOP DAMAGE TO THE HEADER PINS. REFER TO "SAE/USCAR-12 CONNECTOR DESIGN GUIDE LINES" FOR ADDITIONAL INFORMATION.
 - REFER TO USCAR/EWCAP PART LIST AS FOUND ON WEBSITE <http://www.uscarcorp.com>
 - THIS IS A 100% CAD GENERATED PART. THE CAD MATHEMATICAL DATA IS THE MASTER FOR THIS PART. FOR DIMENSIONAL OR ANY INFORMATION NOT SHOWN ON THIS DRAWING, ANALYZE THE CAD MODEL.



REV	DATE	BY	CHK	DESCRIPTION
095	B22			CHANGED ISO VIEW SCALE TO 4:1. WAS 1:1
095	B21			ADDED PARTING LINE NOTE TO DETAIL A. DIM. 14.4 MM
095	B20			CORRECTED CHRYSLER GROUP LLC NOMENCLATURE
095	B19			MOVED NOTE TO SECTION B-B
095	B18			UPDATED NOTES
095	B17			REMOVED 15.20 AND 2.50 FROM SECTION A-A
095	B16			ADDED (3.50)
095	B15			ADDED AT TANGENT NOTE
095	B14			REMOVED DATUM D
095	B13			ADDED BASIC DIMENSIONS FOR PROFILE CONTROL
095	B12			ADDED (0.10 ±0.02) (B12)
095	B11			DIMENSIONED TO DATUM A
095	B10			SEALING SURFACE DIMENSIONS MOVED TO SECTION C-C
095	B9			ADDED SECTION C-C
095	B8			REMOVED 15.20 AND 2.50 FROM SECTION A-A
095	B7			ADDED DRAFT ANGLE DIRECTION
095	B6			REMOVED 0.20 ±0.10 ±0.20 ALL AROUND
095	B5			REPLACED WALL THICKNESS CONTROL WITH DRAFFLE OF A SURFACE
095	B4			ADDED R16.47
095	B3			ADDED 0.70 ±0.15 ALL AROUND
095	B2			UPDATED CONNECTOR COLORS
095	B1			SURFACE 17 RELOCATED TO (3.50) WAS AT 8.20
095	A	RELEASED		

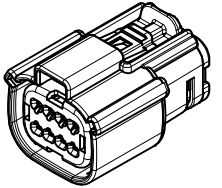
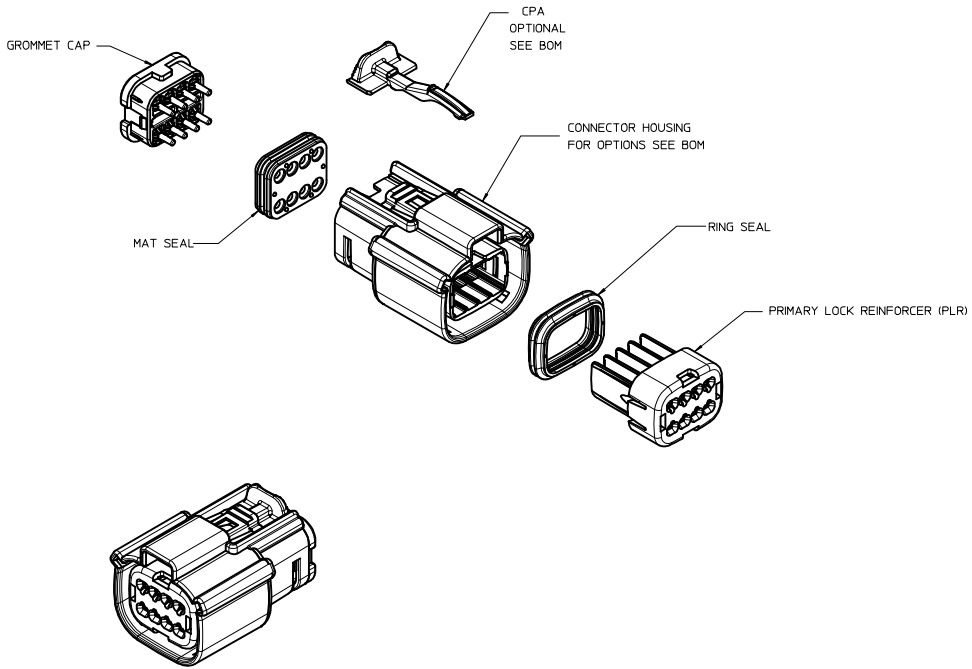
DATE	BY	CHK	DESCRIPTION
03-21-12	KC	MV	
10-17-07	MV	DG	

SCALE	DRAWN BY	CHECKED BY	DATE
4:1	K. LUNNINGHAM	M. ANSLAMBROUCK	03-21-12

REV	DATE	BY	CHK	DESCRIPTION
10F-1		E		DO NOT SCALE DRAWING CONTENTS AND DIMENSIONS

EWCAP
DIRECT CONNECT INTERFACE
8 WAY (2 X 4) 1.5 MM SEALED MALE

TABLE OF CONTENTS	
SHEET NO.	SHEET DESCRIPTION
1	NOTES
2	KEY CONFIGURATIONS
3	RECEPTACLE SEALED ASSEMBLY
4	BACKSHELL NOTES
5	BACKSHELL
6	BACKSHELL CONFIGURATIONS
7-9	BOM



NOTES: VALID UNLESS OTHERWISE SPECIFIED

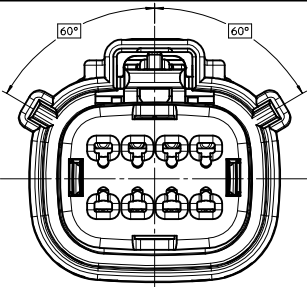
1. GENERAL:
 - a. APPLICATION SPECIFICATION SEE: AS-33472-100
 - CONTAINS: PRODUCT INTRODUCTION, PRODUCT SUMMARY, CONNECTOR ASSEMBLY, PACKAGING INFORMATION, CONNECTOR MATING, SERVICE INSTRUCTIONS, ELECTRICAL CONTINUITY CHECKING, CRIMPING, AND TROUBLESHOOTING.
 - DESIGNED TO MATE WITH DEVICE CONNECTION AS SPECIFIED IN DRAWING EWCAP 150-S-008-2-Z02, AVAILABLE AT <http://ewcap.uscarteams.org/>.
 - DESIGNED TO MATE WITH BLADE SEALED ASSEMBLY AS SPECIFIED IN DRAWING SD-33482-081
 - FOR 15mm RECEPTACLE TERMINALS TO BE USED WITH THIS ASSEMBLY, SEE MOLEX DRAWING SD-33012-002.
 - SYSTEM TO BE USED WITH WIRE WITH DIAMETER RANGE OF 1.2mm TO 2.69mm.
 - ASSEMBLY SHIPPED WITH PLR AND CPA IN PRE-LOCK POSITION (SEE SECTION Z-Z PRE-LOCK).
 - IN THE EVENT THAT THE PLR IS FOUND IN THE SEATED (FINAL LOCK) POSITION, REFER TO MOLEX SPECIFICATION PS-34646-001, AVAILABLE AT www.molex.com <http://www.molex.com>.
 - ASSEMBLY CONFORMS TO SAE/USCAR-2 REV.4 WITH THE FOLLOWING EXCEPTIONS:
 - ENGAGEMENT FORCE TO MOVE CPA FROM PRE-LOCK TO FINAL LOCK POSITION: 40N MIN.
 - DISENGAGEMENT FORCE TO MOVE CPA FROM FINAL LOCK TO PRE-LOCK POSITION: 3N MIN, 40N MAX
 - TERMINAL INSERTION FORCE FOR WIRE DIAMETER ABOVE 2.5mm NOT EXCEEDING 2.69mm SHALL NOT EXCEED 40 NEWTONS.
 - PLR REMOVAL FROM FINAL LOCK TO PRE-LOCK POSITION SHALL NOT EXCEED 130 NEWTONS.
 - b. PRODUCT SPECIFICATION SEE: PS-33472-000
 - CONTAINS: PRODUCT INTRODUCTION, PRODUCT SUMMARY, RATINGS (CURRENT, TEMPERATURE, SEALING, AND FLAMMABILITY), AND PRODUCT VALIDATION.
 - c. PACKAGING SPECIFICATION PER MOLEX DRAWING: PK-31300-003
 - d. PARTS MUST BE IN COMPLIANCE TO MOLEX CHEMICAL SUBSTANCES FOR PRODUCTS AND PACKAGING SPECIFICATION: ES-40000-5016
 - e. DATA MUST BE SUBMITTED UNDER THE MOLEX PART NUMBER TO IMDS (COMPANY ID#13295)
 - f. FOR INFORMATION ON 2X4 RECEPTACLE SEALED ASSEMBLY WITH CLIPSLOT SEE SD-33472-091
2. DESIGN - MATERIALS:
 - a. SEE BOM TABLE
3. DESIGN - GEOMETRY:
 - a. THIS IS A 100% CAD GENERATED PART. THE CAD MATHEMATICAL DATA IS THE MASTER FOR THIS PART. FOR DIMENSIONAL OR ANY INFORMATION NOT SHOWN ON THIS DRAWING, ANALYZE THE CAD MODEL.
 - b. GEOMETRIC DIMENSIONS AND TOLERANCES PER ASME Y14.5M - 1994
 - c. EDGES AND UNDIMENSIONED DETAILS PER ISO13715
 - d. CORNERS SHOWN AS SHARP TO BE R 0.2 MAX.
 - e. LETTERING SHALL BE 0.15 MAX RAISED IN 0.25 MAX RECESS PAD. THIS INCLUDES RECYCLING CODE, CAVITY ID, VENDOR IDENTIFICATION, AND CUSTOMER MATERIAL NUMBER.
 - f. VISUAL DEFECTS SHALL MEET COSMETIC STANDARD PS-45499-002 (Class B).
 - g. LASER MARKING: TBD

INSPECTION NUMBERR LOG
 LAST NUMBER USED:
 ADDED:
 REMOVED:

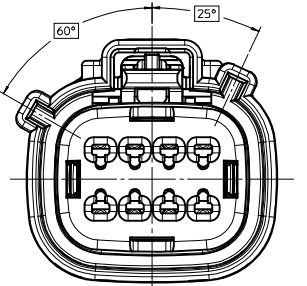
Y9	ADD NEW P/N 33472-0900
Y8	UPDATED VIEWSET & NOTES
Y7	RENAMED BACKSHELLS
Y6	ADD NEW P/N 33472-0898 33472-0899
Y5	UPDATED DIMENSIONS TO MATCH MODEL
Y4	ADD NEW P/N 33472-0897
Y3	UPDATED 33472-0803 33472-0804 33472-0808 33472-0809 PRODUCTION STATUS
Y2	ADD NEW P/N 33472-0895 33472-0896
Y1	UPDATED NOMENCLATURE ON SHEET 3
Y	ADD NEW P/N 33472-0894
	REDRAWN, ADDED BACKSHELL
REV	DESCRIPTION

ENTER DESCRIPTION EC NO: UAU2013-1812 DRAWN BY: Y0 CHKD: APPR: WKSHY DESCRIPTION: 2013/05/17 2013/05/21	QUALITY SYMBOLS ▽=0 ▽=0 ▽=0	GENERAL TOLERANCES (UNLESS SPECIFIED) mm INCH 4 PLACES ± --- ± --- 3 PLACES ± 0.10 ± --- 2 PLACES ± 0.3 ± --- 0 PLACE ± ±	DIMENSION STYLE MM ONLY DRAWN BY: D. MARCOUX DATE: 06-13-02 CHECKED BY: DGRIFITHS DATE: 06-13-02 APPROVED BY: FHOLUB DATE: 06-13-02	SCALE: 2:1 DESIGN UNITS: METRIC THIRD ANGLE PROJECTION	TITLE: MX150 2X4 RECEPTACLE SEALED ASSEMBLY MAT SEAL molex	MATERIAL NO: SEE BOM DRAFT WHERE APPLICABLE MUST REMAIN WITHIN DIMENSIONS SIZE: D THIS DRAWING CONTAINS INFORMATION THAT IS PROPRIETARY TO MOLEX INCORPORATED AND SHOULD NOT BE USED WITHOUT WRITTEN PERMISSION	DOCUMENT NO: SD-33472-081 SHEET NO: 1 OF 9
	ANGULAR ± 3 ° DRAFT WHERE APPLICABLE MUST REMAIN WITHIN DIMENSIONS						
	THIS DRAWING CONTAINS INFORMATION THAT IS PROPRIETARY TO MOLEX INCORPORATED AND SHOULD NOT BE USED WITHOUT WRITTEN PERMISSION						

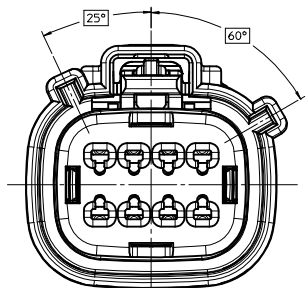
KEY CONFIGURATIONS



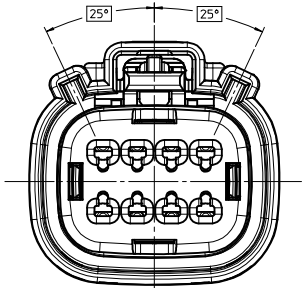
KEY A



KEY B



KEY C



KEY D

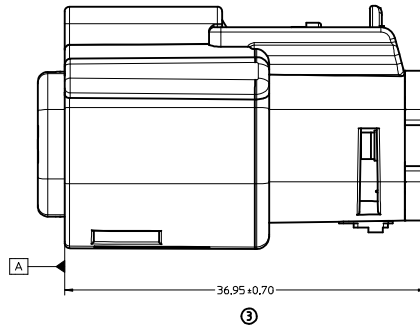
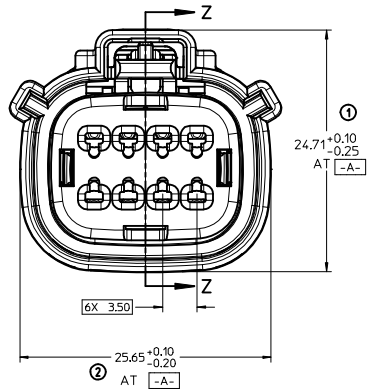
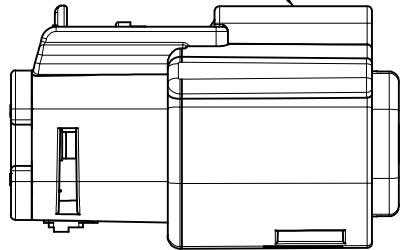
ENTER DESCRIPTION DEC NO: UAU2013-1812 DRAWN BY Y9 CHECKED BY APPR: WOSHY 2013/05/17 2013/05/21	QUALITY SYMBOLS ∇=0 ∇=0 ∇=0	GENERAL TOLERANCES (UNLESS SPECIFIED) mm INCH 4 PLACES ± .005 ± .0008 3 PLACES ± .002 ± .0004 2 PLACES ± 0.10 ± .004 1 PLACE ± 0.3 ± .012 0 PLACE ± ±	DIMENSION STYLE MM ONLY	SCALE 4:1	DESIGN UNITS METRIC	THIRD ANGLE PROJECTION
	DRAFT WHERE APPLICABLE MUST REMAIN WITHIN DIMENSIONS	MATERIAL NO. SEE BOM	DRAWN BY D. MARCOUX DATE 06-13-02	CHECKED BY D. GRIFFITHS DATE 06-13-02	APPROVED BY FHOLUB DATE 06-13-02	TITLE MX150 2X4 RECEPTACLE SEALED ASSEMBLY MAT SEAL

molex

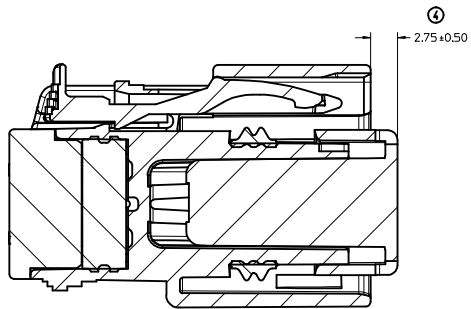
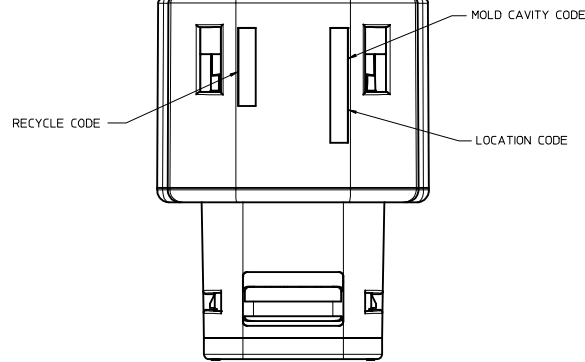
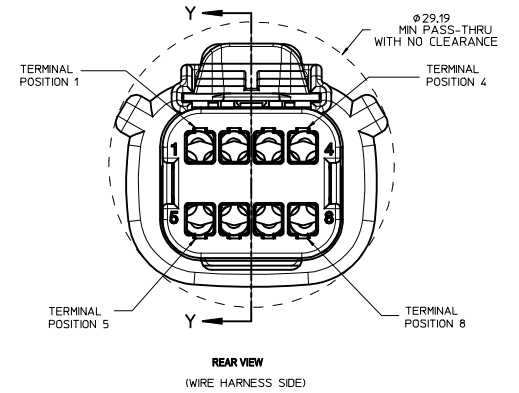
SHEET NO.
2 OF 9

THIS DRAWING CONTAINS INFORMATION THAT IS PROPRIETARY TO MOLEX INCORPORATED AND SHOULD NOT BE USED WITHOUT WRITTEN PERMISSION

LASER MARKING ON THIS SURFACE
SEE NOTE 3g.

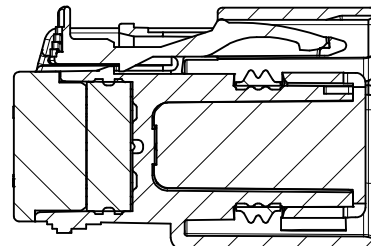


RECEPTACLE SEALED ASSEMBLY



PRIMARY LOCK REINFORCEMENT (PLR) SHOWN
IN PRE-STAGED POSITION

SECTION Z-Z

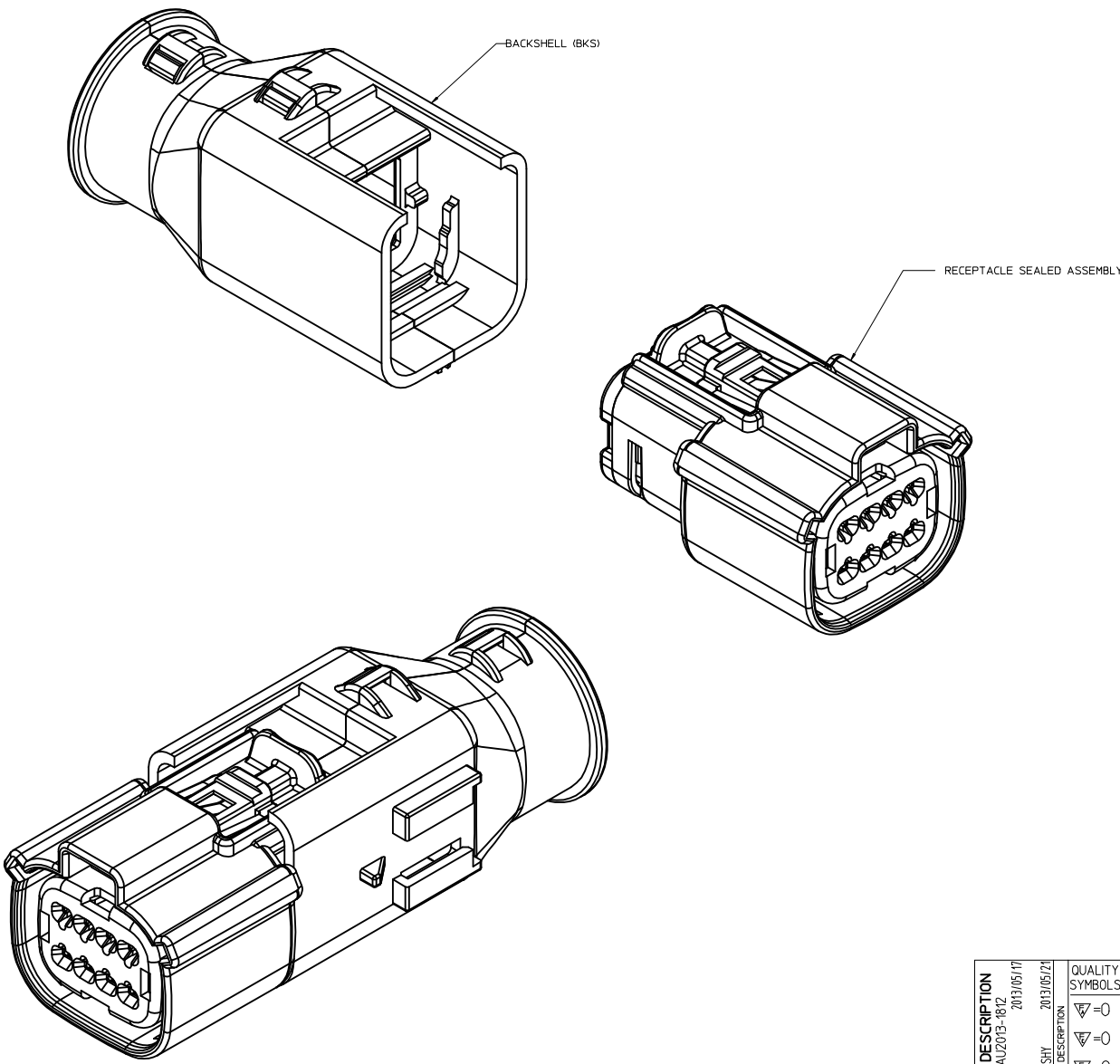


PRIMARY LOCK REINFORCEMENT (PLR) SHOWN
IN FINAL-LOCK POSITION

SECTION Y-Y

ENTER DESCRIPTION EEC NO: UAU2013-1812 DRAWN BY: YS CHKD: YS APPR: IKOSHY 2013/05/17 2013/05/21	QUALITY SYMBOLS ∇=0 ∇=0 ∇=0		GENERAL TOLERANCES (UNLESS SPECIFIED) mm INCH 4 PLACES +--- +--- 3 PLACES +--- +--- 2 PLACES +0.10 +--- 1 PLACE +0.3 +--- 0 PLACE + +		DIMENSION STYLE MM ONLY		SCALE 4:1	DESIGN UNITS METRIC	THIRD ANGLE PROJECTION
	DRAFT WHERE APPLICABLE MUST REMAIN WITHIN DIMENSIONS		ANGULAR ± 3 °		DRAWN BY: D. MARCOUX DATE: 06-13-02	CHECKED BY: D. GRIFFITHS DATE: 06-13-02	APPROVED BY: F. HOLUB DATE: 06-13-02	TITLE MX150 2X4 RECEPTACLE SEALED ASSEMBLY MAT SEAL	
	MATERIAL NO. SEE BOM		DOCUMENT NO. SD-33472-081		SHEET NO. 3 OF 9		THIS DRAWING CONTAINS INFORMATION THAT IS PROPRIETARY TO MOLEX INCORPORATED AND SHOULD NOT BE USED WITHOUT WRITTEN PERMISSION		
	SIZE D								

BACKSHELL NOTES



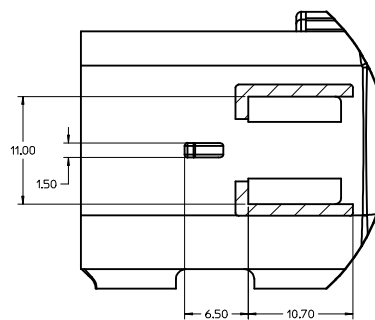
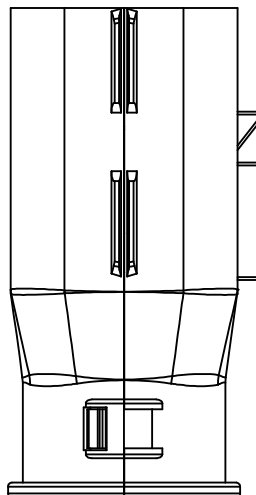
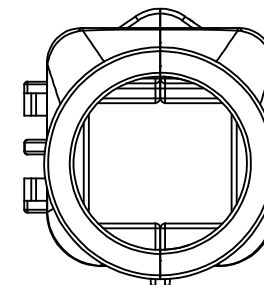
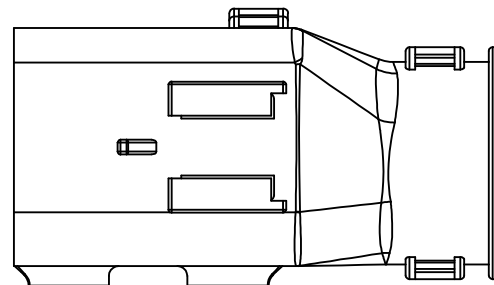
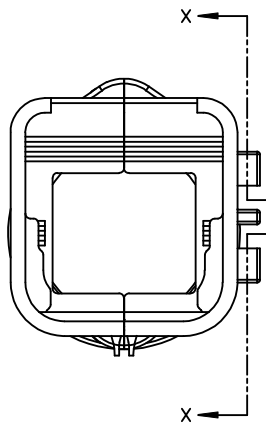
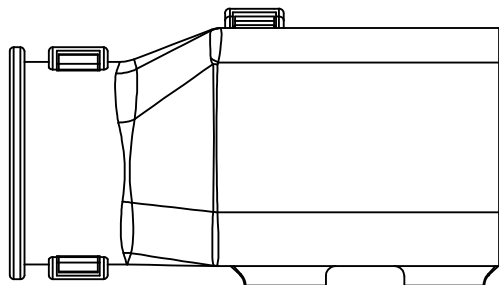
BACKSHELL NOTES: VALID UNLESS OTHERWISE SPECIFIED

1. GENERAL:
 a. APPLICATION SPECIFICATION SEE: AS-34951-001
 -DESIGNED TO MATE WITH RECEPTACLE SEALED ASSEMBLY SPECIFIED IN MOLEX DRAWING SD-33472-081.
 -SYSTEM TO BE USED WITH WIRE WITHIN DIAMETER RANGE OF 1.2mm TO 2.69mm.
 -COMPONENTS ARE OPTIONAL AND MUST BE PURCHASED SEPERATELY.
 -BACKSHELL DESIGN IS OWNED BY SCHLEMMER.
 -FOR ADDITIONAL INFORMATION SEE THE BACKSHELL COMPONENT DRAWING SD-34951-0001.

ENTER DESCRIPTION DEC NO: JAU2013-1812 DRAWN BY: Y0 CHKD: Y0 APPR: WKSHY 2013/05/17 2013/05/21 DESCRIPTION	QUALITY SYMBOLS	GENERAL TOLERANCES (UNLESS SPECIFIED)	DIMENSION STYLE	SCALE	DESIGN UNITS	THIRD ANGLE PROJECTION
	▽=0	mm INCH	MM ONLY	4:1	METRIC	☉
	▽=0	4 PLACES # --- # ---	D. MARCOUX	DATE	TITLE	
	▽=0	3 PLACES # --- # ---	06-13-02	MX150 2X4 RECEPTACLE SEALED ASSEMBLY MAT SEAL		
	2 PLACES # 0.10 # ---	D. GRIFFITHS	DATE	molex		
	1 PLACE # 0.3 # ---	APPROVED BY	DATE	DOCUMENT NO.		
	0 PLACE # #	F. HOLUB	06-13-02	SD-33472-081		
		ANGULAR ± 3 °	MATERIAL NO.	SHEET NO.		
		DRAFT WHERE APPLICABLE MUST REMAIN WITHIN DIMENSIONS	SEE BOM	4 OF 9		
			SIZE D	THIS DRAWING CONTAINS INFORMATION THAT IS PROPRIETARY TO MOLEX INCORPORATED AND SHOULD NOT BE USED WITHOUT WRITTEN PERMISSION		

20 19 18 17 16 15 14 13 12 11 10 9 8 7 6 5 4 3 2 1

BACKSHELL
THE VIEWS ON THIS SHEET ARE
IN THE CLOSED UN-ASSEMBLED POSITION



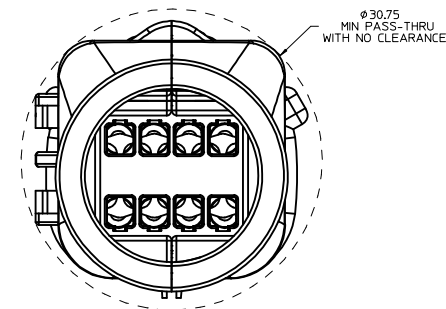
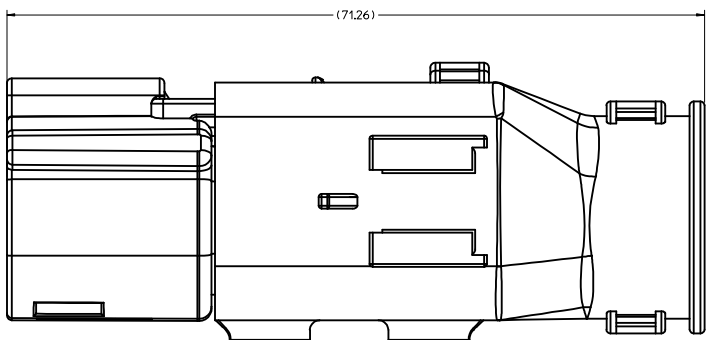
Partial X-X
SCALE 4:1

ENTER DESCRIPTION EC NO: UAU2013-812 DRAWN BY: Y CHKD: Y APPR: WKSHY 2013/05/17 DESCRIPTION: 2013/05/21	QUALITY SYMBOLS ∇=0 ∇=0 ∇=0	GENERAL TOLERANCES (UNLESS SPECIFIED) <table border="1"> <thead> <tr> <th></th> <th>mm</th> <th>INCH</th> </tr> </thead> <tbody> <tr> <td>4 PLACES</td> <td>± .005</td> <td>± .0005</td> </tr> <tr> <td>3 PLACES</td> <td>± .008</td> <td>± .0003</td> </tr> <tr> <td>2 PLACES</td> <td>± 0.10</td> <td>± .004</td> </tr> <tr> <td>1 PLACE</td> <td>± 0.3</td> <td>± .012</td> </tr> <tr> <td>0 PLACE</td> <td>±</td> <td>±</td> </tr> </tbody> </table>		mm	INCH	4 PLACES	± .005	± .0005	3 PLACES	± .008	± .0003	2 PLACES	± 0.10	± .004	1 PLACE	± 0.3	± .012	0 PLACE	±	±	DIMENSION STYLE MM ONLY	SCALE 4:1	DESIGN UNITS METRIC	THIRD ANGLE PROJECTION
		mm	INCH																					
	4 PLACES	± .005	± .0005																					
	3 PLACES	± .008	± .0003																					
2 PLACES	± 0.10	± .004																						
1 PLACE	± 0.3	± .012																						
0 PLACE	±	±																						
DRAWN BY: D. MARCOUX CHECKED BY: D. GRIFFITHS APPROVED BY: F. HOLUB DATE: 06-13-02 DATE: 06-13-02 DATE: 06-13-02	MATERIAL NO. SEE BOM	TITLE MX150 2X4 RECEPTACLE SEALED ASSEMBLY MAT SEAL	DOCUMENT NO. SD-33472-081	SHEET NO. 5 OF 9																				
DRAFT WHERE APPLICABLE MUST REMAIN WITHIN DIMENSIONS						THIS DRAWING CONTAINS INFORMATION THAT IS PROPRIETARY TO MOLEX INCORPORATED AND SHOULD NOT BE USED WITHOUT WRITTEN PERMISSION																		
SIZE D																								

19 18 17 16 15 14 13 12 11 10 9 8 7 6 5 4 3 2 1

20 19 18 17 16 15 14 13 12 11 10 9 8 7 6 5 4 3 2 1

BACKSHELL CONFIGURATIONS



RECEPTACLE SEALED ASSEMBLY WITH RECEPTACLE BACKSHELL

ENTER DESCRIPTION EC NO: UAU2013-812 DRAWN BY: YD CHKD: APPR: WKSHY DATE: 2013/05/17 2013/05/21 DESCRIPTION	QUALITY SYMBOLS	GENERAL TOLERANCES (UNLESS SPECIFIED)	DIMENSION STYLE	SCALE	DESIGN UNITS	THIRD ANGLE PROJECTION
	▽=0	mm INCH	MM ONLY	4:1	METRIC	☉
	▽=0	4 PLACES ± --- ± ---	DRAWN BY DATE			
	▽=0	3 PLACES ± 0.10 ± ---	D. MARCOUX 06-13-02			
	2 PLACES ± 0.3 ± ---	CHECKED BY DATE				TITLE MX150 2X4 RECEPTACLE SEALED ASSEMBLY MAT SEAL molex
	1 PLACE ± --- ±	D. GRIFFITHS 06-13-02				
	0 PLACE ± --- ±	APPROVED BY DATE				DOCUMENT NO.
		ANGULAR ± 3 °	MATERIAL NO.			SD-33472-081
		DRAFT WHERE APPLICABLE MUST REMAIN WITHIN DIMENSIONS	SEE BOM			SHEET NO.
			SIZE D			6 OF 9
			THIS DRAWING CONTAINS INFORMATION THAT IS PROPRIETARY TO MOLEX INCORPORATED AND SHOULD NOT BE USED WITHOUT WRITTEN PERMISSION			

19 18 17 16 15 14 13 12 11 10 9 8 7 6 5 4 3 2 1

ASSEMBLY DESCRIPTION	ASSEMBLY PART NUMBER	A	B	C	D	C	D	C	D	A	GCO	GCP	CPA	1	2	3	4	5	6	7	8	STATUS	COMMENTS	BACKSHELL WITH RIBS	BACKSHELL WITHOUT RIBS
VOID KEY	33472-0840																								
KEY D, W/CPA, GREEN	33472-0839				D						GCP	CPA	1		4	5						NOT RECOMMENDED		34951-0810	34951-0820
KEY C, W/CPA, BROWN	33472-0838				C						GCP	CPA	1		4	5						NOT RECOMMENDED		34951-0810	34951-0820
KEY B, W/CPA, LIGHT GRAY	33472-0837		B								GCP	CPA	1		4	5							34951-0810	34951-0820	
KEY A, W/CPA, BLACK	33472-0836		A								GCP	CPA	1		4	5							34951-0810	34951-0820	
VOID KEY	33472-0835																								
KEY D, GREEN	33472-0834				D						GCP		1		4	5						NOT RECOMMENDED		34951-0810	34951-0820
KEY C, BROWN	33472-0833				C						GCP		1		4	5						NOT RECOMMENDED		34951-0810	34951-0820
KEY B, LIGHT GRAY	33472-0832		B								GCP		1		4	5							34951-0810	34951-0820	
KEY A, BLACK	33472-0831		A								GCP		1		4	5							34951-0810	34951-0820	
VOID KEY	33472-0830																								
KEY D, W/CPA, GREEN	33472-0829				D						GCP	CPA			4	5						NOT RECOMMENDED		34951-0810	34951-0820
KEY C, W/CPA, BROWN	33472-0828				C						GCP	CPA			4	5						NOT RECOMMENDED		34951-0810	34951-0820
KEY B, W/CPA, LIGHT GRAY	33472-0827		B								GCP	CPA			4	5							34951-0810	34951-0820	
KEY A, W/CPA, BLACK	33472-0826		A								GCP	CPA			4	5							34951-0810	34951-0820	
VOID KEY	33472-0825																								
KEY D, GREEN	33472-0824				D						GCP				4	5						NOT RECOMMENDED		34951-0810	34951-0820
KEY C, BROWN	33472-0823				C						GCP				4	5						NOT RECOMMENDED		34951-0810	34951-0820
KEY B, LIGHT GRAY	33472-0822		B								GCP				4	5							34951-0810	34951-0820	
KEY A, BLACK	33472-0821		A								GCP				4	5							34951-0810	34951-0820	
VOID KEY	33472-0820																								
KEY D, W/CPA, GREEN	33472-0819				D						GCP	CPA			4							NOT RECOMMENDED		34951-0810	34951-0820
KEY C, W/CPA, BROWN	33472-0818				C						GCP	CPA			4							NOT RECOMMENDED		34951-0810	34951-0820
KEY B, W/CPA, LIGHT GRAY	33472-0817		B								GCP	CPA			4								34951-0810	34951-0820	
KEY A, W/CPA, BLACK	33472-0816		A								GCP	CPA			4								34951-0810	34951-0820	
VOID KEY	33472-0815																								
KEY D, GREEN	33472-0814				D						GCP				4							NOT RECOMMENDED		34951-0810	34951-0820
KEY C, BROWN	33472-0813				C						GCP				4							NOT RECOMMENDED		34951-0810	34951-0820
KEY B, LIGHT GRAY	33472-0812		B								GCP				4								34951-0810	34951-0820	
KEY A, BLACK	33472-0811		A								GCP				4								34951-0810	34951-0820	
VOID KEY	33472-0810																								
KEY D, W/CPA, GREEN	33472-0809				D						GCO	CPA										NOT RECOMMENDED USE.PLEASE USE 33472-0882		34951-0810	34951-0820
KEY C, W/CPA, BROWN	33472-0808				C						GCO	CPA										NOT RECOMMENDED USE.PLEASE USE 33472-0881		34951-0810	34951-0820
KEY B, W/CPA, LIGHT GRAY	33472-0807		B								GCO	CPA											34951-0810	34951-0820	
KEY A, W/CPA, BLACK	33472-0806		A								GCO	CPA											34951-0810	34951-0820	
KEY D, BLACK	33472-0805				D						GCO												34951-0810	34951-0820	
KEY D, GREEN	33472-0804				D						GCO											NOT RECOMMENDED USE.PLEASE USE 33472-0880		34951-0810	34951-0820
KEY C, BROWN	33472-0803				C						GCO											NOT RECOMMENDED USE.PLEASE USE 33472-0879		34951-0810	34951-0820
KEY B, LIGHT GRAY	33472-0802		B								GCO												34951-0810	34951-0820	
KEY A, BLACK	33472-0801		A								GCO												34951-0810	34951-0820	

DESCRIPTION	COLOR	MATERIAL
MAT SEAL	LIGHT BLUE	INHERENTLY LUBRICATED SILICONE
RING SEAL	GREEN	INHERENTLY LUBRICATED SILICONE
PLR	NATURAL	SPS/NYLON GF20
CPA	RED	PBT GF20
GROMMET CAP (PLUGGED)	BLACK	SPS/NYLON GF20
GROMMET CAP (OPEN)	BLACK	SPS/NYLON GF20
HOUSING KEYING OPTION A	YELLOW	SPS/NYLON GF20
HOUSING KEYING OPTION D	STONE GRAY	SPS/NYLON GF20
HOUSING KEYING OPTION C	DARK GRAY	SPS/NYLON GF20
HOUSING KEYING OPTION D	BLACK	SPS/NYLON GF20
HOUSING KEYING OPTION D	GREEN	SPS/NYLON GF20
HOUSING KEYING OPTION C	BROWN	SPS/NYLON GF20
HOUSING KEYING OPTION B	LIGHT GRAY	SPS/NYLON GF20
HOUSING KEYING OPTION A	BLACK	SPS/NYLON GF20

ABBREVIATION	COMPONENT
A	HOUSING KEY A
B	HOUSING KEY B
C	HOUSING KEY C
D	HOUSING KEY D
GCO	GROMMET CAP, OPEN
GCP	GROMMET CAP, PLUGGED
PLR	PRIMARY LOCK REINFORCEMENT
CPA	CONNECTOR POSITION ASSURANCE
BKS	BACKSHELL

ENTER DESCRIPTION ELEC NO: UAU2013-1812 DRAWN BY: CHYD DATE: 2013/05/17 APPR: IKOSHY DATE: 2013/05/21 REV: Y9	QUALITY SYMBOLS ∇=0 ∇=0 ∇=0	GENERAL TOLERANCES (UNLESS SPECIFIED) mm INCH 4 PLACES ±--- ±--- 3 PLACES ±--- ±--- 2 PLACES ±0.10 ±--- 1 PLACE ±0.3 ±--- 0 PLACE ± ±	DIMENSION STYLE MM ONLY DRAWN BY: D. MARCOUX DATE: 06-13-02 CHECKED BY: DGRIFITHS DATE: 06-13-02 APPROVED BY: FHOLUB DATE: 06-13-02	SCALE: DESIGN UNITS: METRIC THIRD ANGLE PROJECTION	TITLE: MX150 2X4 RECEPTACLE SEALED ASSEMBLY MAT SEAL molex MATERIAL NO: SEE BOM DOCUMENT NO: SD-33472-081	SHEET NO: 7 OF 9
	DRAFT WHERE APPLICABLE MUST REMAIN WITHIN DIMENSIONS		THIS DRAWING CONTAINS INFORMATION THAT IS PROPRIETARY TO MOLEX INCORPORATED AND SHOULD NOT BE USED WITHOUT WRITTEN PERMISSION			


ASSEMBLY DESCRIPTION	PART NUMBER	A	B	C	D	D	D	D	D	A	GCO	GCP	CPA	1	2	3	4	5	6	7	8	34951-0810	34951-0820	
KEY D, STONE GRAY	33472-0880										D	GCO												
KEY C, DARK GRAY	33472-0879										C	GCO												
KEY A, BLACK	33472-0878	A										GCP				3		5	6					
KEY A, W/CPA, BLACK	33472-0877	A										GCP	CPA											
KEY A, BLACK	33472-0876	A										GCP		1	2	3	4		5	6	7	8		
KEY A, BLACK	33472-0875	A										GCP			2	3								
KEY A, BLACK	33472-0874	A										GCP			2	3					6	7	8	
KEY A, BLACK	33472-0873	A										GCP										7	8	
KEY A, BLACK	33472-0872	A										GCP												
KEY A, BLACK	33472-0871	A										GCP		1	2	3	4	5	6	7				
KEY A, BLACK	33472-0870	A										GCP				3		5	6	7	8			
KEY A, BLACK	33472-0869	A										GCP												
KEY A, BLACK	33472-0868	A										GCP									5	6	8	
KEY A, BLACK	33472-0867	A										GCP		1		3					5	6		
KEY A, BLACK	33472-0866	A										GCP			2	3					5	6	8	
KEY A, BLACK	33472-0865	A										GCP		1							6			
KEY A, BLACK	33472-0864	A										GCP		1		3					5			
KEY A, BLACK	33472-0863	A										GCP			2	3					5		8	
KEY A, BLACK	33472-0862	A										GCP		1										
KEY A, BLACK	33472-0861	A										GCP												
KEY D, BLACK	33472-0860										D	GCP					4							
KEY A, BLACK	33472-0859	A										GCP		1	2	3					6	7	8	
KEY A, W/CPA, BLACK	33472-0858	A										GCP	CPA	1	2	3					5	6	7	
KEY A, W/CPA, BLACK	33472-0857	A										GCP	CPA	1	2						5	6	7	
KEY A, W/CPA, BLACK	33472-0856	A										GCP	CPA		2						6	7		
KEY D, BLACK	33472-0855										D	GCP		1	2	3	4	5	6	7	8			
KEY D, GREEN	33472-0854										D	GCP		1	2	3	4	5	6	7	8			NOT RECOMMENDED
KEY C, BROWN	33472-0853										C	GCP		1	2	3	4	5	6	7	8			NOT RECOMMENDED
KEY B, LIGHT GRAY	33472-0852										B	GCP		1	2	3	4	5	6	7	8			
KEY A, BLACK	33472-0851	A										GCP		1	2	3	4	5	6	7	8			
VOID KEY	33472-0850																							
KEY D, W/CPA, GREEN	33472-0849										D	GCP	CPA	1			4	5						NOT RECOMMENDED
KEY C, W/CPA, BROWN	33472-0848										C	GCP	CPA	1			4	5						NOT RECOMMENDED
KEY B, W/CPA, LIGHT GRAY	33472-0847										B	GCP	CPA	1			4	5						
KEY A, W/CPA, BLACK	33472-0846	A										GCP	CPA	1			4	5						
VOID KEY	33472-0845																							
KEY D, GREEN	33472-0844										D	GCP		1			4	5						NOT RECOMMENDED
KEY C, BROWN	33472-0843										C	GCP		1			4	5						NOT RECOMMENDED
KEY B, LIGHT GRAY	33472-0842										B	GCP		1			4	5						
KEY A, BLACK	33472-0841	A										GCP		1			4	5						

STATUS	COMMENTS	BACKSHELL WITH RIBS	BACKSHELL WITHOUT RIBS

DESCRIPTION	COLOR	MATERIAL
BLOCKED TERMINAL		
CAVITY WITH A NUMBER INDICATES BLOCKED TERMINAL POSITION		
CAVITY WITHOUT A NUMBER INDICATES OPEN TERMINAL POSITION		
MAT SEAL	LIGHT BLUE	INHERENTLY LUBRICATED SILICONE
RING SEAL	GREEN	INHERENTLY LUBRICATED SILICONE
PLR	NATURAL	SPS/NYLON GF20
CPA	RED	PBT GF20
GROMMET CAP (PLUGGED)	BLACK	SPS/NYLON GF20
GROMMET CAP (OPEN)	BLACK	SPS/NYLON GF20
HOUSING KEYING OPTION A	YELLOW	SPS/NYLON GF20
HOUSING KEYING OPTION D	STONE GRAY	SPS/NYLON GF20
HOUSING KEYING OPTION C	DARK GRAY	SPS/NYLON GF20
HOUSING KEYING OPTION D	BLACK	SPS/NYLON GF20
HOUSING KEYING OPTION D	GREEN	SPS/NYLON GF20
HOUSING KEYING OPTION C	BROWN	SPS/NYLON GF20
HOUSING KEYING OPTION B	LIGHT GRAY	SPS/NYLON GF20
HOUSING KEYING OPTION A	BLACK	SPS/NYLON GF20

ABBREVIATION	COMPONENT
A	HOUSING KEY A
B	HOUSING KEY B
C	HOUSING KEY C
D	HOUSING KEY D
GCO	GROMMET CAP, OPEN
GCP	GROMMET CAP, PLUGGED
PLR	PRIMARY LOCK REINFORCEMENT
CPA	CONNECTOR POSITION ASSURANCE
BKS	BACKSHELL

ENTER DESCRIPTION DEC NO. JAU2013-02 DRAWN BY: YD CHECKED: YD APPR: WQSHY 2013/05/17 2013/05/21	QUALITY SYMBOLS ∇=0 ∇=0 ∇=0	GENERAL TOLERANCES (UNLESS SPECIFIED) mm INCH 4 PLACES ±0.10 ±0.004 3 PLACES ±0.15 ±0.005 2 PLACES ±0.20 ±0.008 1 PLACE ±0.30 ±0.012 0 PLACE ±0.50 ±0.020	DIMENSION STYLE MM ONLY	SCALE METRIC	DESIGN UNITS METRIC	THIRD ANGLE PROJECTION
	DRAWN BY: D. MARCOUX DATE: 06-13-02 CHECKED BY: D. GRIFFITHS DATE: 06-13-02 APPROVED BY: FHOLUB DATE: 06-13-02	MATERIAL NO. SEE BOM	DOCUMENT NO. SD-33472-081	SHEET NO. 8 OF 9		

MX150 2X4 RECEPTACLE SEALED ASSEMBLY MAT SEAL

 THIS DRAWING CONTAINS INFORMATION THAT IS PROPRIETARY TO MOLEX INCORPORATED AND SHOULD NOT BE USED WITHOUT WRITTEN PERMISSION

ASSEMBLY DESCRIPTION	ASSEMBLY PART NUMBER	A	B	C	D	D	C	D	A	GCO	GCP	CPA	1	2	3	4	5	6	7	8	STATUS	COMMENTS	BACKSHELL WITH RIBS	BACKSHELL WITHOUT RIBS	
KEY A, W/CPA, BLACK	33472-0900	A									GCP	CPA											34951-0810	34951-0820	
KEY A, BLACK	33472-0899	A									GCP		1	2	3		5	6	7	8			34951-0810	34951-0820	
KEY A, BLACK	33472-0898	A									GCP					4							34951-0810	34951-0820	
KEY B, LIGHT GRAY	33472-0897	B									GCP								6				34951-0810	34951-0820	
KEY A, BLACK	33472-0896	A									GCP		1	2	3	4							34951-0810	34951-0820	
KEY A, BLACK	33472-0895	A									GCP		1	2									34951-0810	34951-0820	
KEY A, W/CPA, BLACK	33472-0894	A									GCP	CPA	1	2	3					6	7	8	34951-0810	34951-0820	
KEY A, W/CPA, BLACK	33472-0893	A									GCP	CPA								6			34951-0810	34951-0820	
KEY A, YELLOW	33472-0892								A	GCO												TOOLED BUT NOT VALIDATED	34951-0810	34951-0820	
KEY A, W/CPA, YELLOW	33472-0891								A	GCO		CPA										TOOLED BUT NOT VALIDATED	34951-0810	34951-0820	
KEY A, W/CPA, YELLOW	33472-0890								A	GCP	CPA		1	2	3							TOOLED BUT NOT VALIDATED	34951-0810	34951-0820	
KEY A, BLACK	33472-0889	A									GCP		1				5						34951-0810	34951-0820	
KEY B, LIGHT GRAY	33472-0888	B									GCP		1							6			34951-0810	34951-0820	
KEY B, W/CPA, LIGHT GRAY	33472-0887	B									GCP	CPA											34951-0810	34951-0820	
KEY A, BLACK	33472-0886	A									GCP				3					6	8		34951-0810	34951-0820	
KEY A, BLACK	33472-0885	A									GCP			2	3	4	5	6					34951-0810	34951-0820	
KEY A, BLACK	33472-0884	A									GCP				3					6	7		34951-0810	34951-0820	
KEY A, BLACK	33472-0883	A									GCP			2	3	4	5					7	8	34951-0810	34951-0820
KEY D, W/CPA, STONE GRAY	33472-0882				D				D	GCO		CPA											34951-0810	34951-0820	
KEY C, W/CPA, DARK GRAY	33472-0881				D				D	GCO		CPA											34951-0810	34951-0820	

BLOCKED TERMINAL
 CAVITY WITH A NUMBER INDICATES BLOCKED TERMINAL POSITION
 CAVITY WITHOUT A NUMBER INDICATES OPEN TERMINAL POSITION

DESCRIPTION	COLOR	MATERIAL
MAT SEAL	LIGHT BLUE	INHERENTLY LUBRICATED SILICONE
RING SEAL	GREEN	INHERENTLY LUBRICATED SILICONE
PLR	NATURAL	SPS/NYLON GF20
CPA	RED	PBT GF20
GROMMET CAP (PLUGGED)	BLACK	SPS/NYLON GF20
GROMMET CAP (OPEN)	BLACK	SPS/NYLON GF20
HOUSING KEYING OPTION A	YELLOW	SPS/NYLON GF20
HOUSING KEYING OPTION D	STONE GRAY	SPS/NYLON GF20
HOUSING KEYING OPTION C	DARK GRAY	SPS/NYLON GF20
HOUSING KEYING OPTION D	BLACK	SPS/NYLON GF20
HOUSING KEYING OPTION D	GREEN	SPS/NYLON GF20
HOUSING KEYING OPTION C	BROWN	SPS/NYLON GF20
HOUSING KEYING OPTION B	LIGHT GRAY	SPS/NYLON GF20
HOUSING KEYING OPTION A	BLACK	SPS/NYLON GF20

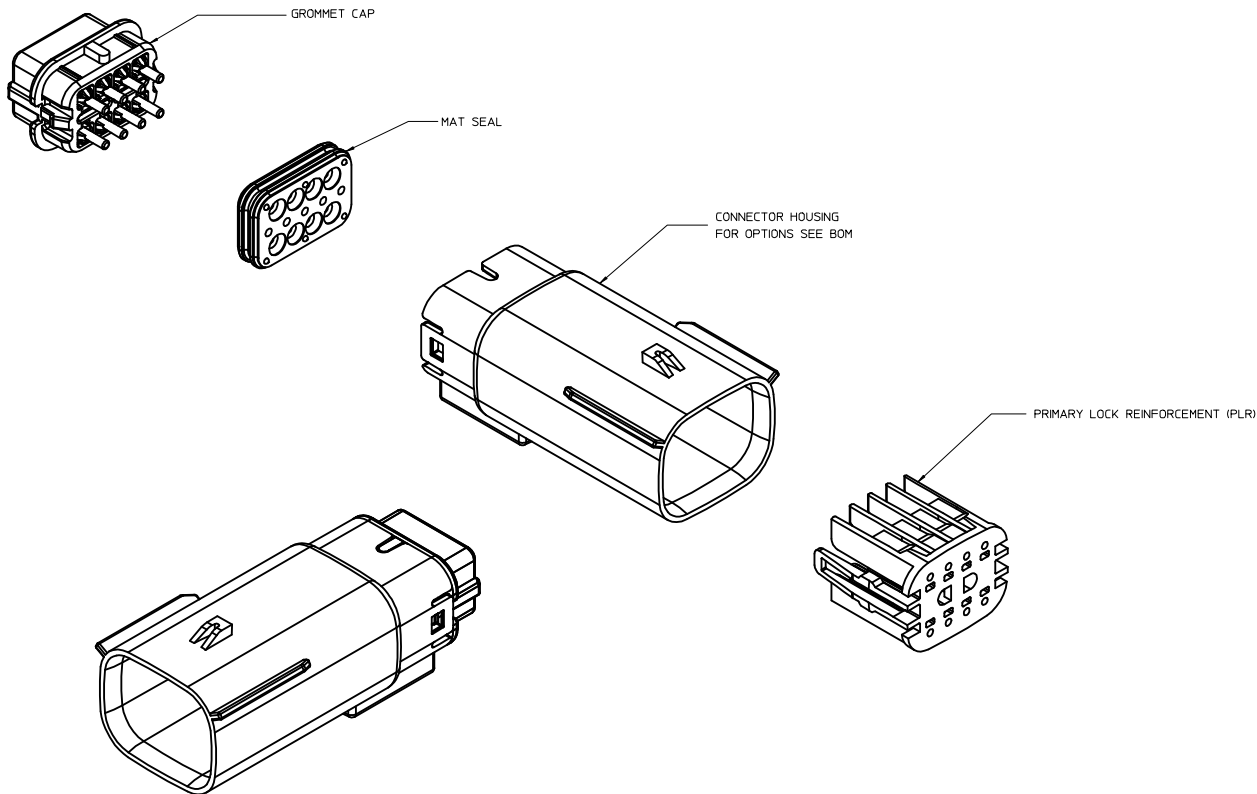
BOM/APPLICABLE COMPONENTS TABLE

ABBREVIATION	COMPONENT
A	HOUSING KEY A
B	HOUSING KEY B
C	HOUSING KEY C
D	HOUSING KEY D
GCO	GROMMET CAP, OPEN
GCP	GROMMET CAP, PLUGGED
PLR	PRIMARY LOCK REINFORCEMENT
CPA	CONNECTOR POSITION ASSURANCE
BKS	BACKSHELL

ENTER DESCRIPTION EEC NO. JAU2013-812 DRAWN BY: YD CHECKED BY: YD APPR: WJSHY 2013/05/17 2013/05/21	QUALITY SYMBOLS ∇=0 ∇=0 ∇=0	GENERAL TOLERANCES (UNLESS SPECIFIED) 4 PLACES ± 0.10 3 PLACES ± 0.15 2 PLACES ± 0.20 1 PLACE ± 0.30 0 PLACE ± 0.50	DIMENSION STYLE MM ONLY	SCALE DESIGN UNITS METRIC	THIRD ANGLE PROJECTION
	MATERIAL NO. SEE BOM	DATE 06-13-02	DATE 06-13-02	DATE 06-13-02	TITLE MX150 2X4 RECEPTACLE SEALED ASSEMBLY MAT SEAL

THIS DRAWING CONTAINS INFORMATION THAT IS PROPRIETARY TO MOLEX INCORPORATED AND SHOULD NOT BE USED WITHOUT WRITTEN PERMISSION

TABLE OF CONTENTS	
SHEET NO.	SHEET DESCRIPTION
1	NOTES
2	KEY CONFIGURATIONS
3	BLADE SEALED ASSEMBLY
4	SYSTEM PACKAGING
5	BACKSHELL NOTES
6	BACKSHELL
7	BACKSHELL CONFIGURATIONS
8-9	BOM



NOTES: VALID UNLESS OTHERWISE SPECIFIED

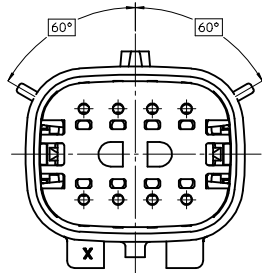
- 1. GENERAL:**
- a. APPLICATION SPECIFICATION SEE: AS-33472-100
 - CONTAINS: PRODUCT INTRODUCTION, PRODUCT SUMMARY, CONNECTOR ASSEMBLY, PACKAGING INFORMATION, CONNECTOR MATING, SERVICE INSTRUCTIONS, ELECTRICAL CONTINUITY CHECKING, CRIMPING, AND TROUBLESHOOTING
 - DESIGNED TO MATE WITH RECEPTACLE SEALED ASSEMBLY SPECIFIED IN MOLEX DRAWING SD-33472-081
 - FOR 15mm RECEPTACLE TERMINALS TO BE USED WITH THIS ASSEMBLY. SEE MOLEX DRAWING SD-33000-001.
 - SYSTEM TO BE USED WITH WIRE WITHIN DIAMETER RANGE OF 12mm TO 2.69mm.
 - ASSEMBLY SHIPPED WITH PLR IN PRE-LOCK POSITION.
 - IN THE EVENT THAT THE PLR IS FOUND IN THE SEATED (FINAL LOCK) POSITION, REFER TO MOLEX SPECIFICATION PS-34646-001, AVAILABLE AT www.molex.com <<http://www.molex.com>>.
 - ASSEMBLY CONFORMS TO SAE/USCAR-2 REV.4 WITH THE FOLLOWING EXCEPTIONS: TERMINAL INSERTION FORCE FOR WIRE DIAMETER ABOVE 2.5mm NOT EXCEEDING 2.69mm SHALL NOT EXCEED 45 NEWTONS.
 - b. PRODUCT SPECIFICATION SEE: PS-33472-000
 - CONTAINS: PRODUCT INTRODUCTION, PRODUCT SUMMARY, RATINGS (CURRENT, TEMPERATURE, SEALING, AND FLAMMABILITY), AND PRODUCT VALIDATION.
 - c. PACKAGING SPECIFICATION PER MOLEX DRAWING: PK-31300-635
 - d. PARTS MUST BE IN COMPLIANCE TO MOLEX CHEMICAL SUBSTANCES FOR PRODUCTS AND PACKAGING SPECIFICATION: ES-40000-5016
 - e. DATA MUST BE SUBMITTED UNDER THE MOLEX PART NUMBER TO IMDS (COMPANY ID#13255)
- 2. DESIGN - MATERIALS:**
- a. SEE BOM TABLE
- 3. DESIGN - GEOMETRY:**
- a. THIS IS A 100% CAD GENERATED PART. THE CAD MATHEMATICAL DATA IS THE MASTER FOR THIS PART. FOR DIMENSIONAL OR ANY INFORMATION NOT SHOWN ON THIS DRAWING, ANALYZE THE CAD MODEL.
 - b. GEOMETRIC DIMENSIONS AND TOLERANCES PER ASME Y14.5M - 1994
 - c. EDGES AND UNDIMENSIONED DETAILS PER ISO15715
 - d. CORNERS SHOWN AS SHARP TO BE R 0.2 MAX.
 - e. LETTERING SHALL BE 0.15 MAX RAISED IN 0.25 MAX RECESS PAD. THIS INCLUDES RECYCLING CODE, CAVITY ID, VENDOR IDENTIFICATION, AND CUSTOMER MATERIAL NUMBER.
 - f. VISUAL DEFECTS SHALL MEET COSMETIC STANDARD PS-45499-002 (Class B) CAD MODEL.
 - g. LASER MARKING: TBD

INSPECTION LOG
 LAST NUMBER USED:
 ADDED:
 REMOVED:

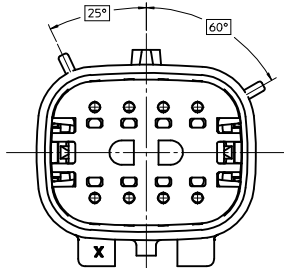
REV	DESCRIPTION
AH1	UPDATED VIEWSET & NOTES
AH	UPDATED GROMMET CAP
AG1	RENAMED BACKSHELLS
AG	ADDED NEW P/N 33482-0857 33482-0858 33482-0859
AF1	UPDATED DIMENSIONS TO MATCH MODEL
AF	ADDED NEW P/N 33482-0854 33482-0855 33482-0856
AE	COLOR REPLACEMENT FOR KEY C AND D PER USCAR STANDARD
AD	REDRAWN, ADDED BACKSHELL

REVISED REC NO: UAU2013-1763 DRAWN BY: DRWNSD/HALL CHKD: APPR:DC LLSLE 2013/05/02 2013/05/08 DESCRIPTION AH1	QUALITY SYMBOLS ∇=0 ∇=0 ∇=0	GENERAL TOLERANCES (UNLESS SPECIFIED) DIMENSION STYLE: MM ONLY SCALE: 3:1 DESIGN UNITS: METRIC THIRD ANGLE PROJECTION	DRAWN BY: DMARCOUX DATE: 06-17-02 CHECKED BY: DGRIFITHS DATE: 06-17-02 APPROVED BY: VKOSHY DATE: 2010/10/27	TITLE: MX150 2X4 BLADE SEALED ASSEMBLY MAT SEAL molex	MATERIAL NO: SEE BOM DOCUMENT NO: SD-33482-081 SHEET NO: 1 OF 9
	ANGULAR ± 3 ° DRAFT WHERE APPLICABLE MUST REMAIN WITHIN DIMENSIONS		THIS DRAWING CONTAINS INFORMATION THAT IS PROPRIETARY TO MOLEX INCORPORATED AND SHOULD NOT BE USED WITHOUT WRITTEN PERMISSION		

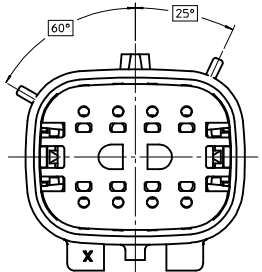
KEY CONFIGURATIONS



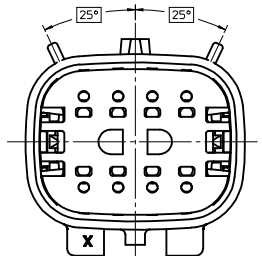
KEY A



KEY B



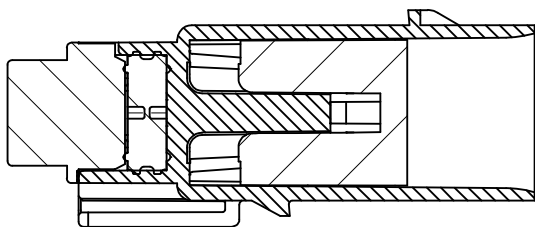
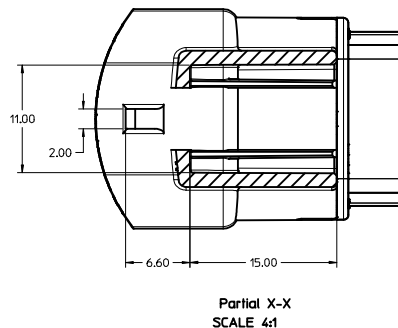
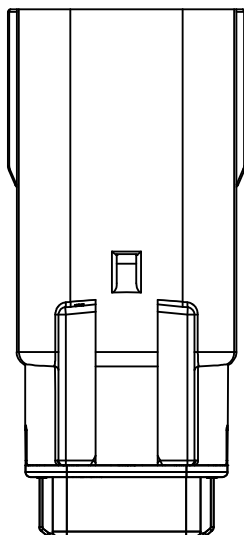
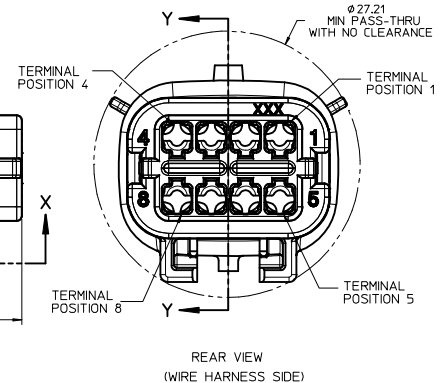
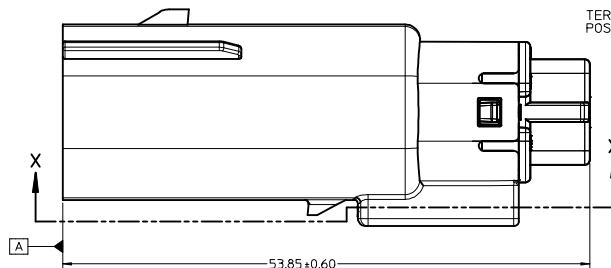
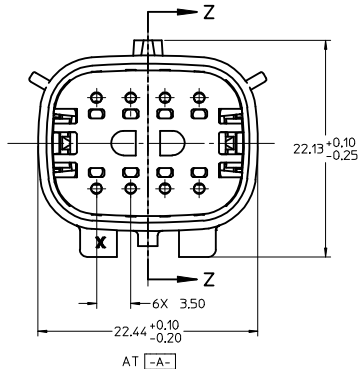
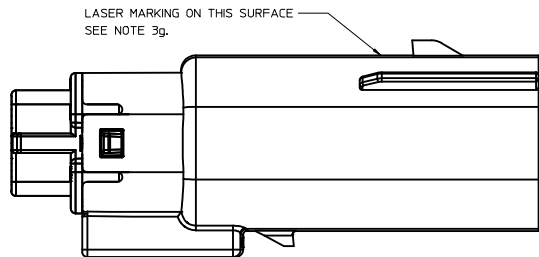
KEY C



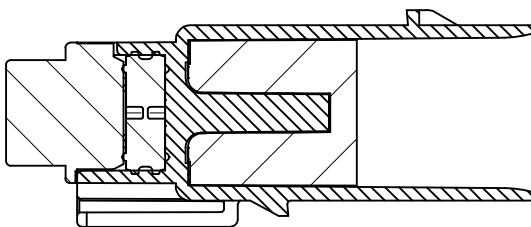
KEY D

REVISED DEC NO: 11/01/2013-1763 DRAWN: DAHALL CHKD: APPR: C. LISLE 2013/05/08 AH1	QUALITY SYMBOLS	GENERAL TOLERANCES (UNLESS SPECIFIED)	DIMENSION STYLE	SCALE	DESIGN UNITS	THIRD ANGLE PROJECTION	
	∇=0 ∇=0 ∇=0	4 PLACES ± 3 PLACES ± 2 PLACES ±0.10 1 PLACE ±0.3 0 PLACE ±	mm INCH ANGULAR ± 3 ° DRAFT WHERE APPLICABLE MUST REMAIN WITHIN DIMENSIONS	MM ONLY DRAWN BY: DMARCOUX CHECKED BY: DGRIFITHS APPROVED BY: VKOSHY DATE: 06-17-02 DATE: 06-17-02 DATE: 2010/10/27	4:1	METRIC	MX150 2X4 BLADE SEALED ASSEMBLY MAT SEAL molex
	MATERIAL NO: SEE BOM	DOCUMENT NO: SD-33482-081	SHEET NO: 2 OF 9				
	THIS DRAWING CONTAINS INFORMATION THAT IS PROPRIETARY TO MOLEX INCORPORATED AND SHOULD NOT BE USED WITHOUT WRITTEN PERMISSION						

BLADE SEALED ASSEMBLY

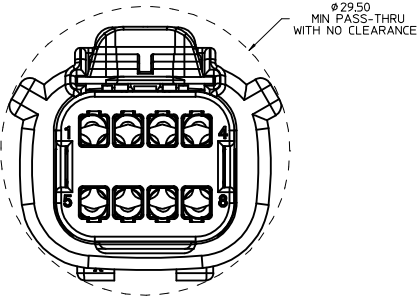
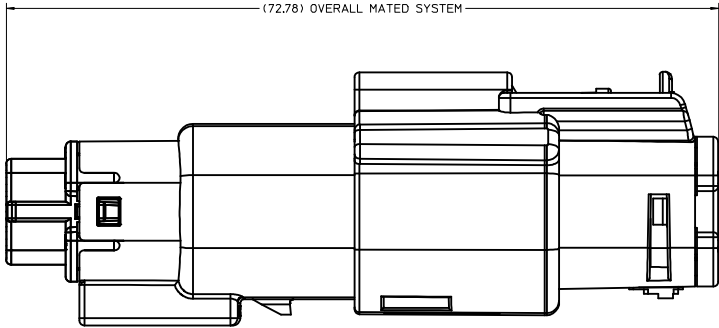


PRIMARY LOCK REINFORCEMENT (PLR) SHOWN
IN THE PRE-STAGED POSITION
SECTION Z-Z



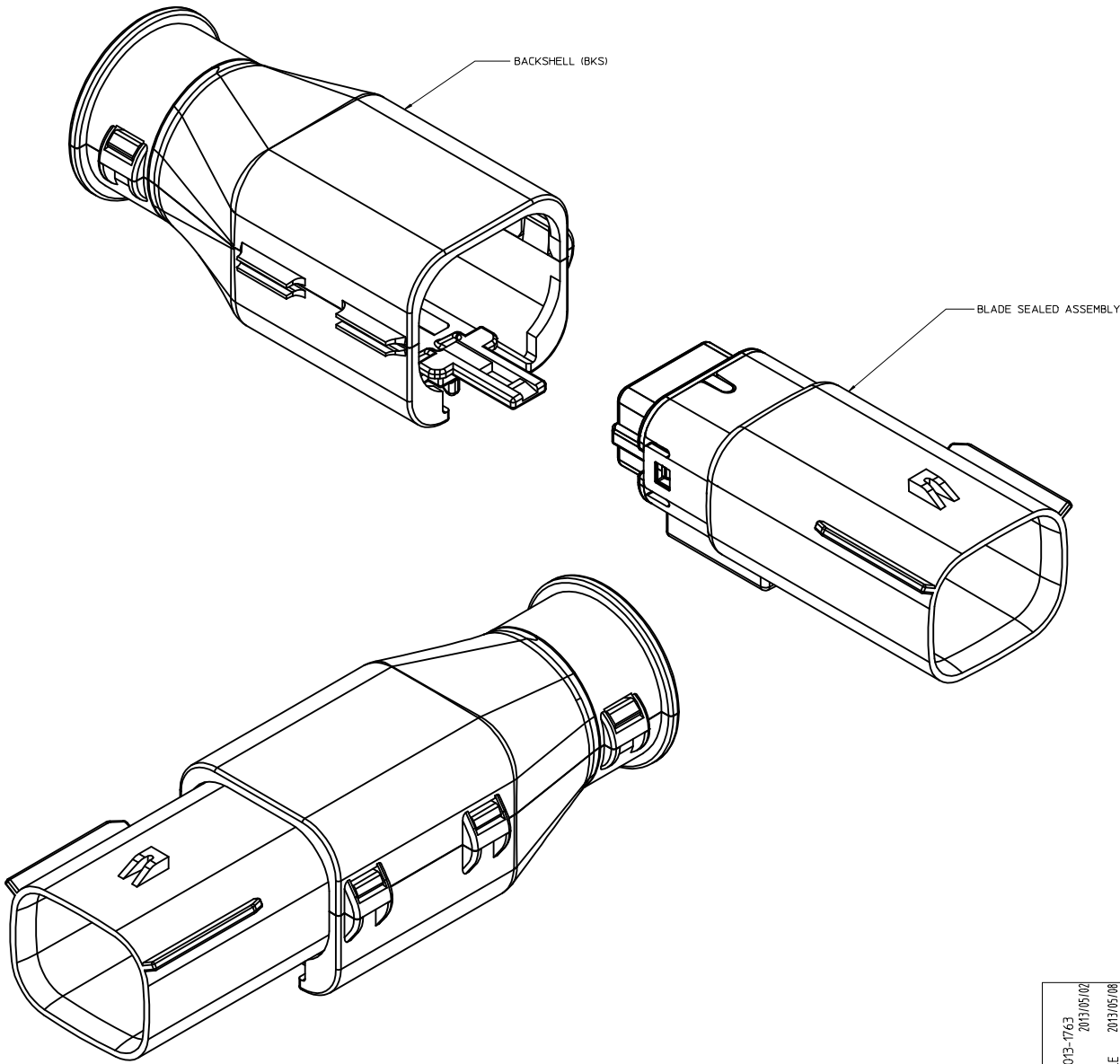
PRIMARY LOCK REINFORCEMENT (PLR) SHOWN
IN THE FINAL-LOCK POSITION
SECTION Y-Y

REVISED DEC NO. UAU2013-1763 DRAWN BY DRW:DAHALL CHKD: APPR:DC LISLE 2013/05/02 2013/05/08 AH1	QUALITY SYMBOLS	GENERAL TOLERANCES (UNLESS SPECIFIED)	DIMENSION STYLE	SCALE	DESIGN UNITS	THIRD ANGLE PROJECTION	
	$\nabla=0$ $\nabla=0$ $\nabla=0$	mm INCH 4 PLACES \pm --- \pm --- 3 PLACES \pm --- \pm --- 2 PLACES ± 0.10 \pm --- \pm --- 1 PLACE ± 0.3 \pm --- \pm --- 0 PLACE \pm \pm --- \pm ---	MM ONLY	4:1	METRIC	DRAWN BY DATE DMARCOUX 06-17-02 CHECKED BY DATE DGRIFITHS 06-17-02 APPROVED BY DATE VKOSHY 2010/10/27	MX150 2X4 BLADE SEALED ASSEMBLY MAT SEAL molex SD-33482-081
	ANGULAR $\pm 3^\circ$ DRAFT WHERE APPLICABLE MUST REMAIN WITHIN DIMENSIONS	MATERIAL NO. SEE BOM	DOCUMENT NO. SD-33482-081	SHEET NO. 3 OF 9			
	SIZE D THIS DRAWING CONTAINS INFORMATION THAT IS PROPRIETARY TO MOLEX INCORPORATED AND SHOULD NOT BE USED WITHOUT WRITTEN PERMISSION						



REVISED DEC NO. UAU2013-1763 DRAWN: DAHALL CHKD: APPR: DC LISLE 2013/05/02 2013/05/08 AH1	QUALITY SYMBOLS	GENERAL TOLERANCES (UNLESS SPECIFIED)	DIMENSION STYLE	SCALE	DESIGN UNITS	THIRD ANGLE PROJECTION
	▽=0	mm INCH	MM ONLY	4:1	METRIC	☉
	▽=0	4 PLACES ± --- ± ---	DRAWN BY DATE	TITLE		
	▽=0	3 PLACES ± --- ± ---	DMARCOUX 06-17-02	MX150 2X4 BLADE SEALED ASSEMBLY MAT SEAL		
▽=0	2 PLACES ± 0.10 ± ---	CHECKED BY DATE	molex			
	1 PLACE ± 0.3 ± ---	DGRIFITHS 06-17-02	DOCUMENT NO.			
	0 PLACE ± ±	APPROVED BY DATE	SD-33482-081			
		VKOSHY 2010/10/27	SHEET NO.			
			4 OF 9			
		ANGULAR ± 3 °	THIS DRAWING CONTAINS INFORMATION THAT IS PROPRIETARY TO MOLEX INCORPORATED AND SHOULD NOT BE USED WITHOUT WRITTEN PERMISSION			
		DRAFT WHERE APPLICABLE MUST REMAIN WITHIN DIMENSIONS				

BACKSHELL NOTES

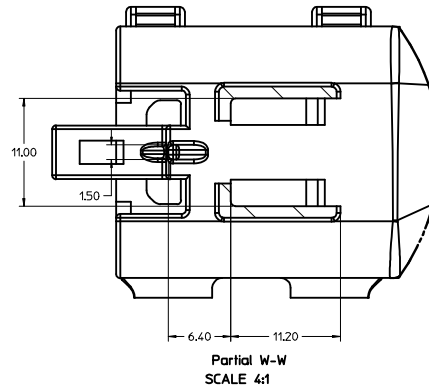
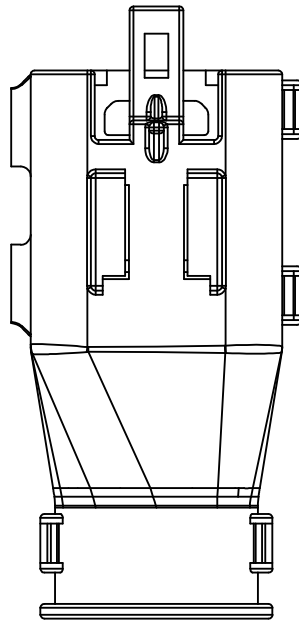
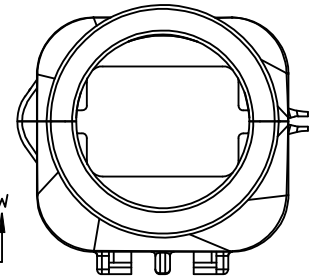
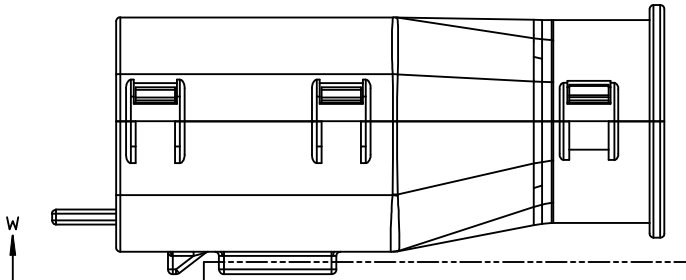
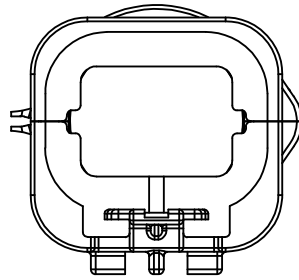
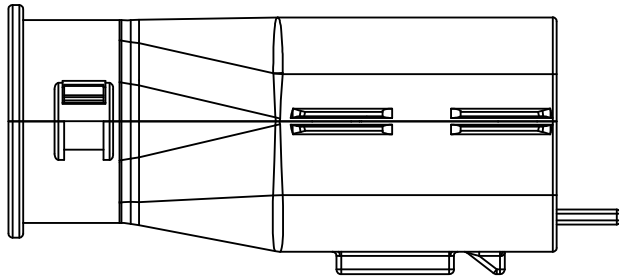


BACKSHELL NOTES: VALID UNLESS OTHERWISE SPECIFIED

1. GENERAL:
- a. APPLICATION SPECIFICATION SEE: AS-34951-001
 - DESIGNED TO MATE WITH BLADE SEALED ASSEMBLY SPECIFIED IN MOLEX DRAWING SD-33482-081.
 - SYSTEM TO BE USED WITH WIRE WITHIN DIAMETER RANGE OF 1.2mm TO 2.69mm.
 - COMPONENTS ARE OPTIONAL AND MUST BE PURCHASED SEPERATELY.
 - BACKSHELL DESIGN IS OWNED BY SCHLEMMER.
 - FOR ADDITIONAL INFORMATION SEE THE BACKSHELL COMPONENT DRAWING SD-34950-0001.

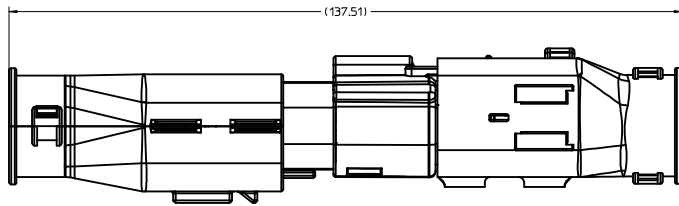
REVISED DEC NO. UAU2013-1763 DRAWN: DAHALL CHKD: APPR: DC LISLE 2013/05/02 2013/05/08 DESCRIPTION AH1	QUALITY SYMBOLS	GENERAL TOLERANCES (UNLESS SPECIFIED)	DIMENSION STYLE	SCALE	DESIGN UNITS	THIRD ANGLE PROJECTION	
	▽=0	mm INCH	MM ONLY	4:1	METRIC	☉	
	▽=0	4 PLACES ± --- ± ---	DRAWN BY DATE	TITLE MX150 2X4 BLADE SEALED ASSEMBLY MAT SEAL molex MATERIAL NO. SEE BOM DOCUMENT NO. SD-33482-081 SHEET NO. 5 OF 9			
	▽=0	3 PLACES ± --- ± ---	DMARCOUX 06-17-02				
▽=0	2 PLACES ± 0.10 ± ---	CHECKED BY DATE					
▽=0	1 PLACE ± 0.3 ± ---	DGRIFFITHS 06-17-02					
	0 PLACE ± ±	APPROVED BY DATE					
		ANGULAR ± 3 °	VKOSHY 2010/10/27				
		DRAFT WHERE APPLICABLE MUST REMAIN WITHIN DIMENSIONS					

BACKSHELL
THE VIEWS ON THIS SHEET ARE
IN THE CLOSED UN-ASSEMBLED POSITION

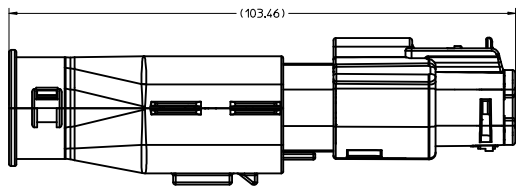
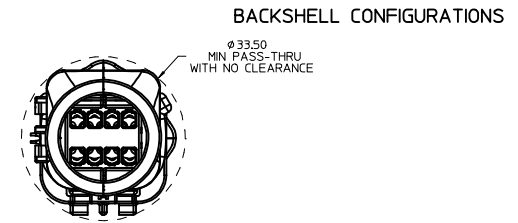


REVISED DEC NO. UAU2013-1763 DRAWN: DMARCOUX CHKD: DGRIFITHS APPR: DC LISLE 2013/05/02 2013/05/08 AH1	QUALITY SYMBOLS ∇=0 ∇=0 ∇=0	GENERAL TOLERANCES (UNLESS SPECIFIED) <table border="1"> <thead> <tr> <th></th> <th>mm</th> <th>INCH</th> </tr> </thead> <tbody> <tr> <td>4 PLACES</td> <td>± .05</td> <td>± .002</td> </tr> <tr> <td>3 PLACES</td> <td>± .08</td> <td>± .003</td> </tr> <tr> <td>2 PLACES</td> <td>± 0.10</td> <td>± .004</td> </tr> <tr> <td>1 PLACE</td> <td>± 0.3</td> <td>± .012</td> </tr> <tr> <td>0 PLACE</td> <td>±</td> <td>±</td> </tr> </tbody> </table>		mm	INCH	4 PLACES	± .05	± .002	3 PLACES	± .08	± .003	2 PLACES	± 0.10	± .004	1 PLACE	± 0.3	± .012	0 PLACE	±	±	DIMENSION STYLE MM ONLY	SCALE 4:1	DESIGN UNITS METRIC	THIRD ANGLE PROJECTION
		mm	INCH																					
4 PLACES	± .05	± .002																						
3 PLACES	± .08	± .003																						
2 PLACES	± 0.10	± .004																						
1 PLACE	± 0.3	± .012																						
0 PLACE	±	±																						
DRAFT WHERE APPLICABLE MUST REMAIN WITHIN DIMENSIONS	MATERIAL NO. SEE BOM	DRAWN BY DMARCOUX DATE 06-17-02	CHECKED BY DGRIFITHS DATE 06-17-02	APPROVED BY VKOSHY DATE 2010/10/27	TITLE MX150 2X4 BLADE SEALED ASSEMBLY MAT SEAL	DOCUMENT NO. SD-33482-081																		

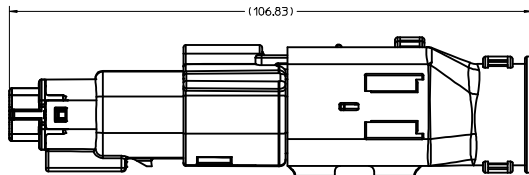
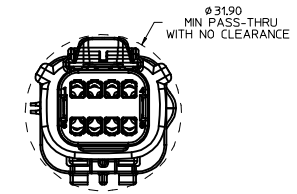
SHEET NO.
6 OF 9



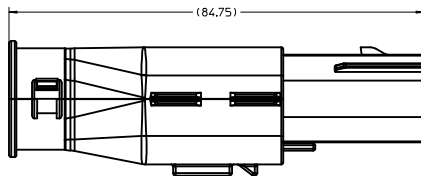
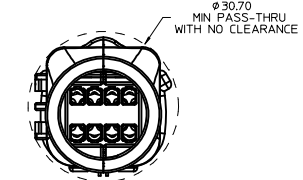
OVERALL MATED SYSTEM WITH BLADE AND RECEPTACLE BACKSHELL



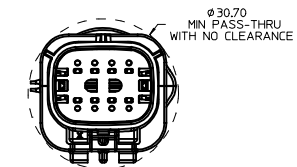
OVERALL MATED SYSTEM WITH BLADE BACKSHELL



OVERALL MATED SYSTEM WITH RECEPTACLE BACKSHELL



BLADE SEALED ASSEMBLY WITH BLADE BACKSHELL



REVISED DEC NO. UAU2013-1763 DRAWN BY DMARCOUX CHKD: DGRIFITHS APPR: DC LISLE 2013/05/02 2013/05/08 AH1	QUALITY SYMBOLS ▽=0 ▽=0 ▽=0	GENERAL TOLERANCES (UNLESS SPECIFIED)		DIMENSION STYLE MM ONLY	SCALE 2:1	DESIGN UNITS METRIC	THIRD ANGLE PROJECTION
		4 PLACES ± 0.10 3 PLACES ± 0.15 2 PLACES ± 0.20 1 PLACE ± 0.30 0 PLACE ± 0.50	mm INCH	DRAWN BY DATE DMARCOUX 06-17-02 CHECKED BY DATE DGRIFITHS 06-17-02 APPROVED BY DATE VKOSHY 2010/10/27	TITLE MX150 2X4 BLADE SEALED ASSEMBLY MAT SEAL	MATERIAL NO. SEE BOM	DOCUMENT NO. SD-33482-081

KEY A, BLACK	33482-0840	A								GCP	2	3		5	6	8			34950-0810	34950-0820	
KEY B, LIGHT GRAY	33482-0839		B							GCP						8			34950-0810	34950-0820	
KEY A, BLACK	33482-0838	A								GCP	2	3		5	6	7	8		34950-0810	34950-0820	
KEY A, BLACK	33482-0837	A								GCP	1		4						34950-0810	34950-0820	
KEY A, BLACK	33482-0836	A								GCP	2	3			6	7	8		34950-0810	34950-0820	
KEY A, BLACK	33482-0835	A								GCP						7	8		34950-0810	34950-0820	
KEY A, BLACK	33482-0834	A								GCP	1	2	3	4	5	6	7	8	34950-0810	34950-0820	
KEY A, BLACK	33482-0833	A								GCP	1		3		5				34950-0810	34950-0820	
KEY A, BLACK	33482-0832	A								GCP					5	6	8		34950-0810	34950-0820	
KEY A, BLACK	33482-0831	A								GCP		3		5	6				34950-0810	34950-0820	
KEY A, BLACK	33482-0830	A								GCP						6			34950-0810	34950-0820	
KEY A, BLACK	33482-0829	A								GCP	2	3	4	5	6	7			34950-0810	34950-0820	
KEY A, BLACK	33482-0828	A								GCP		3		5					34950-0810	34950-0820	
KEY A, BLACK	33482-0827	A								GCP							8		34950-0810	34950-0820	
KEY A, BLACK	33482-0826	A								GCP	1	2	3			6	7	8	34950-0810	34950-0820	
VOID KEY	33482-0825																				
KEY D, GREEN	33482-0824			D						GCP	4			4	5		8	NOT RECOMMENDED	34950-0810	34950-0820	
KEY C, BROWN	33482-0823			C						GCP	1			4	5		8	NOT RECOMMENDED	34950-0810	34950-0820	
KEY B, LIGHT GRAY	33482-0822			B						GCP	1			4	5		8		34950-0810	34950-0820	
KEY A, BLACK	33482-0821	A								GCP	1			4	5		8		34950-0810	34950-0820	
VOID KEY	33482-0820																				
KEY D, GREEN	33482-0819			D						GCP	1			4	5			NOT RECOMMENDED	34950-0810	34950-0820	
KEY C, BROWN	33482-0818			C						GCP	1			4	5			NOT RECOMMENDED	34950-0810	34950-0820	
KEY B, LIGHT GRAY	33482-0817			B						GCP	1			4	5				34950-0810	34950-0820	
KEY A, BLACK	33482-0816	A								GCP	1			4	5				34950-0810	34950-0820	
VOID KEY	33482-0815																				
KEY D, GREEN	33482-0814			D						GCP				4	5			NOT RECOMMENDED	34950-0810	34950-0820	
KEY C, BROWN	33482-0813			C						GCP				4	5			NOT RECOMMENDED	34950-0810	34950-0820	
KEY B, LIGHT GRAY	33482-0812			B						GCP				4	5				34950-0810	34950-0820	
KEY A, BLACK	33482-0811	A								GCP				4	5				34950-0810	34950-0820	
VOID KEY	33482-0810																				
KEY D, GREEN	33482-0809			D						GCP				4				NOT RECOMMENDED	34950-0810	34950-0820	
KEY C, BROWN	33482-0808			C						GCP				4				NOT RECOMMENDED	34950-0810	34950-0820	
KEY B, LIGHT GRAY	33482-0807			B						GCP				4					34950-0810	34950-0820	
KEY A, BLACK	33482-0806	A								GCP				4					34950-0810	34950-0820	
VOID KEY	33482-0805																				
KEY D, GREEN	33482-0804			D						GCO								NOT RECOMMENDED	SEE P/N 33482-0853	34950-0810	34950-0820
KEY C, BROWN	33482-0803			C						GCO								NOT RECOMMENDED	SEE P/N 33482-0852	34950-0810	34950-0820
KEY B, LIGHT GRAY	33482-0802			B						GCO									34950-0810	34950-0820	
KEY A, BLACK	33482-0801	A								GCO									34950-0810	34950-0820	

AE
AE

ASSEMBLY DESCRIPTION	ASSEMBLY PART NUMBER	A	B	C	D	C	D	A	GCO	GCP	1	2	3	4	5	6	7	8	PRODUCTION TOOL STATUS	COMMENTS	BACKSHELL WITH RIBS	BACKSHELL WITHOUT RIBS
BLOCKED TERMINAL																						
CAVITY WITH A NUMBER INDICATES BLOCKED TERMINAL POSITION																		OPTIONAL ATTACHMENTS SOLD SEPERATELY				
CAVITY WITHOUT A NUMBER INDICATES OPEN TERMINAL POSITION																						

GROMMET SEAL	BURNT ORANGE	INHERENTLY LUBRICATED SILICONE
PLR	NATURAL	SPS/NYLON GF20
GROMMET CAP (PLUGGED)	BLACK	SPS/NYLON GF20
GROMMET CAP (OPEN)	BLACK	SPS/NYLON GF20
HOUSING KEYING OPTION A	YELLOW	SPS/NYLON GF20
HOUSING KEYING OPTION D	STONE GRAY	SPS/NYLON GF20
HOUSING KEYING OPTION C	DARK GRAY	SPS/NYLON GF20
HOUSING KEYING OPTION D	GREEN	SPS/NYLON GF20
HOUSING KEYING OPTION C	BROWN	SPS/NYLON GF20
HOUSING KEYING OPTION B	LIGHT GRAY	SPS/NYLON GF20
HOUSING KEYING OPTION A	BLACK	SPS/NYLON GF20

DESCRIPTION	COLOR	MATERIAL
BOM/APPLICABLE COMPONENTS TABLE		

ABREVIATION	COMPONENT
A	HOUSING KEY A
B	HOUSING KEY B
C	HOUSING KEY C
D	HOUSING KEY D
GCO	GROMMET CAP, OPEN
GCP	GROMMET CAP, PLUGGED
PLR	PRIMARY LOCK REINFORCEMENT
BKS	BACKSHELL

REVISED DEC NO. 04/2013-1763 DRAWN: DAHALL CHKD: APPR: DC LLSLE 2013/05/08 2013/05/08 AH1	QUALITY SYMBOLS ∇=0 ∇=0 ∇=0	GENERAL TOLERANCES (UNLESS SPECIFIED) mm INCH 4 PLACES ± .010 ± .004 3 PLACES ± .012 ± .005 2 PLACES ± 0.10 ± .008 1 PLACE ± 0.3 ± .012 0 PLACE ± ±	DIMENSION STYLE MM ONLY	SCALE DESIGN UNITS METRIC	THIRD ANGLE PROJECTION	
	DRAWN BY DMARCOUX DATE 06-17-02	CHECKED BY DGRIFITHS DATE 06-17-02	APPROVED BY VKOSHY DATE 2010/10/27	MATERIAL NO. SEE BOM	DOCUMENT NO. SD-33482-081	SHEET NO. 8 OF 9
	ANGLULAR ± 3 ° DRAFT WHERE APPLICABLE MUST REMAIN WITHIN DIMENSIONS					THIS DRAWING CONTAINS INFORMATION THAT IS PROPRIETARY TO MOLEX INCORPORATED AND SHOULD NOT BE USED WITHOUT WRITTEN PERMISSION
	MX150 2X4 BLADE SEALED ASSEMBLY MAT SEAL					molex

ASSEMBLY DESCRIPTION	ASSEMBLY PART NUMBER	A	B	C	D	A	GCO	GCP	1	2	3	4	5	6	7	8	PRODUCTION TOOL STATUS	COMMENTS	BACKSHELL WITH RIBS	BACKSHELL WITHOUT RIBS
KEY A, BLACK	33482-0859	A						GCP	1		3		5	6	7			34950-0810	34950-0820	
KEY A, BLACK	33482-0858	A						GCP	1	2	3	4	5		8			34950-0810	34950-0820	
KEY A, BLACK	33482-0857	A						GCP	1	2	3	5						34950-0810	34950-0820	
KEY A, BLACK	33482-0856	A						GCP	1	2								34950-0810	34950-0820	
KEY A, BLACK	33482-0855	A						GCP	1	2			5	6	7	8		34950-0810	34950-0820	
KEY A, BLACK	33482-0854	A						GCP	1	2	3	4						34950-0810	34950-0820	
KEY D, STONE GRAY	33482-0853				D		GCO											34950-0810	34950-0820	
KEY C, DARK GRAY	33482-0852			C			GCO											34950-0810	34950-0820	
KEY A, YELLOW	33482-0851					A	GCO											34950-0810	34950-0820	
KEY A, YELLOW	33482-0850					A		GCP	1			4					TOOLED BUT NOT VALIDATED	34950-0810	34950-0820	
KEY B, LIGHT GRAY	33482-0849	B						GCP	1					6				34950-0810	34950-0820	
KEY A, BLACK	33482-0848	A						GCP	1				5					34950-0810	34950-0820	
KEY B, LIGHT GRAY	33482-0847	B						GCP	1	2	3	4	5	6	7	8		34950-0810	34950-0820	
KEY A, BLACK	33482-0846	A						GCP				4	5					34950-0810	34950-0820	
KEY A, BLACK	33482-0845	A						GCP	2	3	4	5	6					34950-0810	34950-0820	
KEY A, BLACK	33482-0844	A						GCP		3			6					34950-0810	34950-0820	
KEY A, BLACK	33482-0843	A						GCP				4			7			34950-0810	34950-0820	
KEY A, BLACK	33482-0842	A						GCP							7			34950-0810	34950-0820	
KEY A, BLACK	33482-0841	A						GCP						6	7			34950-0810	34950-0820	

TOOLED BUT NOT VALIDATED
 TOOLED BUT NOT VALIDATED
 PRODUCTION TOOL STATUS
 COMMENTS
 BACKSHELL WITH RIBS
 BACKSHELL WITHOUT RIBS
 OPTIONAL ATTACHMENTS SOLD SEPERATELY

BLOCKED TERMINAL
 CAVITY WITH A NUMBER INDICATES BLOCKED TERMINAL POSITION
 CAVITY WITHOUT A NUMBER INDICATES OPEN TERMINAL POSITION

GROMMET SEAL	BURNT ORANGE	INHERENTLY LUBRICATED SILICONE
PLR	NATURAL	SPS/NYLON GF20
GROMMET CAP (PLUGGED)	BLACK	SPS/NYLON GF20
GROMMET CAP (OPEN)	BLACK	SPS/NYLON GF20
HOUSING KEYING OPTION A	YELLOW	SPS/NYLON GF20
HOUSING KEYING OPTION D	STONE GRAY	SPS/NYLON GF20
HOUSING KEYING OPTION C	DARK GRAY	SPS/NYLON GF20
HOUSING KEYING OPTION D	GREEN	SPS/NYLON GF20
HOUSING KEYING OPTION C	BROWN	SPS/NYLON GF20
HOUSING KEYING OPTION B	LIGHT GRAY	SPS/NYLON GF20
HOUSING KEYING OPTION A	BLACK	SPS/NYLON GF20

DESCRIPTION	COLOR	MATERIAL
BOM/APPLICABLE COMPONENTS TABLE		

TABLE LEGEND

ABREVIATION	COMPONENT
A	HOUSING KEY A
B	HOUSING KEY B
C	HOUSING KEY C
D	HOUSING KEY D
GCO	GROMMET CAP, OPEN
GCP	GROMMET CAP, PLUGGED
PLR	PRIMARY LOCK REINFORCEMENT
BKS	BACKSHELL

REVISED DEC NO. 04/2013-1763 DRAWN BY AH1 2013/05/02 CHKD: APPR:DC LLSLE 2013/05/08 REVISION DESCRIPTION	QUALITY SYMBOLS ∇=0 ∇=0 ∇=0	GENERAL TOLERANCES (UNLESS SPECIFIED) mm INCH 4 PLACES ± --- ± --- 3 PLACES ± 0.10 ± --- 1 PLACE ± 0.3 ± --- 0 PLACE ± ±	DIMENSION STYLE MM ONLY DRAWN BY DATE DMARCOUX 06-17-02 CHECKED BY DATE DGRIFITHS 06-17-02 APPROVED BY DATE VKOSHY 2010/10/27	SCALE DESIGN UNITS METRIC THIRD ANGLE PROJECTION	TITLE MX150 2X4 BLADE SEALED ASSEMBLY MAT SEAL molex MATERIAL NO. SEE BOM DOCUMENT NO. SD-33482-081	SHEET NO. 9 OF 9
	DRAFT WHERE APPLICABLE MUST REMAIN WITHIN DIMENSIONS					
	THIS DRAWING CONTAINS INFORMATION THAT IS PROPRIETARY TO MOLEX INCORPORATED AND SHOULD NOT BE USED WITHOUT WRITTEN PERMISSION					