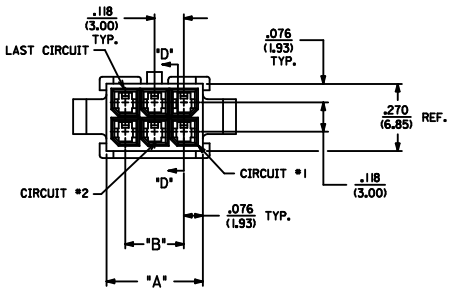
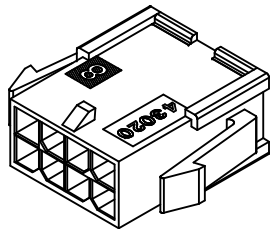


ASSEMBLY ITEM NUMBER	PART CHARACTERISTICS	
	NUMBER OF POSITION	PANEL MOUNT OPTION
43020-0208	2	YES
43020-0209	2	NO
43020-0408	4	YES
43020-0409	4	NO
43020-0808	6	YES
43020-0809	6	NO
43020-0808	8	YES
43020-0809	8	NO
43020-1008	10	YES
43020-1009	10	NO
43020-1208	12	YES
43020-1209	12	NO
	14	YES
	14	NO
	16	YES
	16	NO
	18	YES
	18	NO
	20	YES
	20	NO
	22	YES
	22	NO
	24	YES
	24	NO

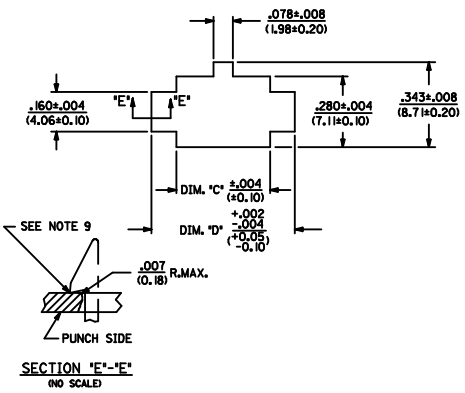
CKT. NO.	DIM. 'A'	DIM. 'B'	DIM. 'C'	DIM. 'D'
2	.152/(3.86)	N/A	.166/(4.21)	.311/(7.90)
4	.270/(6.85)	.118/(3.00)	.284/(7.21)	.429/(10.90)
6	.388/(9.85)	.236/(6.00)	.402/(10.21)	.547/(13.89)
8	.506/(12.85)	.354/(9.00)	.520/(13.21)	.665/(16.89)
10	.624/(15.85)	.472/(12.00)	.638/(16.21)	.783/(19.89)
12	.742/(18.85)	.591/(15.00)	.756/(19.21)	.901/(22.89)
14	.860/(21.85)	.709/(18.00)	.874/(22.20)	1.019/(25.88)
16	.978/(24.85)	.827/(21.00)	.992/(25.20)	1.137/(28.88)
18	1.096/(27.85)	.945/(24.00)	1.110/(28.20)	1.255/(31.88)
20	1.215/(30.85)	1.063/(27.00)	1.229/(31.22)	1.373/(34.87)
22	1.333/(33.85)	1.181/(30.00)	1.347/(34.22)	1.491/(37.87)
24	1.451/(36.85)	1.299/(33.00)	1.465/(37.22)	1.609/(40.87)



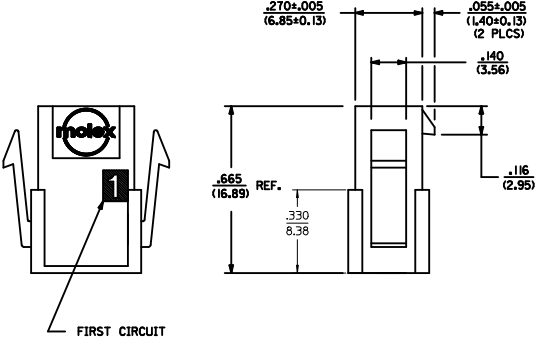
- NOTES:
- HOUSING MATERIAL: UNFILLED NYLON 6, UL 94V-0, IEC 60335-1, 4TH EDITION GLOW WIRE CAPABLE, COLOR - BLACK
  - FINISH: N/A
  - PRODUCT SPECIFICATION: PS-43045
  - PACKAGING SPECIFICATION: PK-43020-001
  - THIS HOUSING MATES WITH MICRO-FIT RECEPTACLE #43025-\*\*\*\*
  - THIS HOUSING TO BE USED WITH MOLEX MALE TERMINAL #43031-\*\*\*\*
  - DESIGNED FOR .055/(1.4) MINIMUM TO A .100/(2.54) MAXIMUM THICK PANEL OR PRINTED CIRCUIT BOARD.
  - SEE SECTION "D"-D' FOR TERMINAL ORIENTATION IN HOUSING.
  - PANEL MOUNT FEATURES MUST LOCK ON SIDE OPPOSITE PUNCH SIDE FOR OPTIMUM RETENTION.
  - THIS PART CONFORMS TO CLASS 'B' REQUIREMENTS OF COSMETIC SPECIFICATION PS-45499-002, EXCEPT 2 AND 4 CIRCUIT PARTS CONFORM TO CLASS 'C' SURFACE REQUIREMENTS.



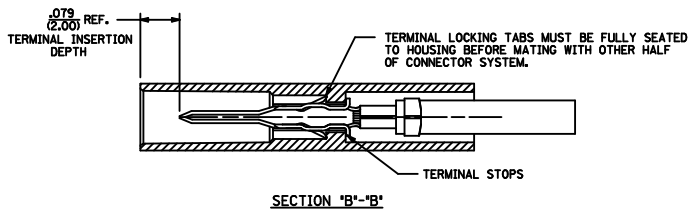
PLUG WITH OPTIONAL PANEL MOUNTS  
ISO VIEW  
(8 CIRCUIT SHOWN)



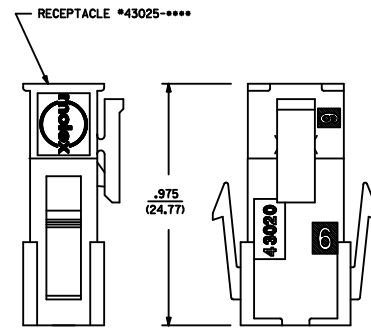
RECOMMENDED PANEL CUT-OUT



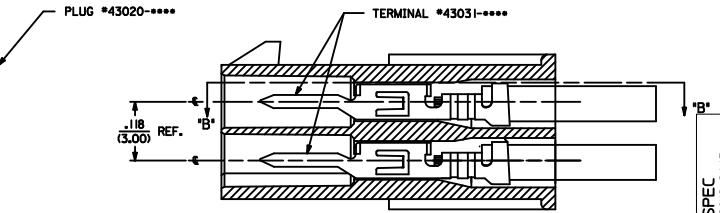
SECTION "D"-D'  
WITH TERMINAL  
(SCALE: 8X)



SECTION "B"-B'



MATED MICRO-FIT CONNECTOR



ADD PK SPEC IEC NO. UCP2012-2645 DRAWN BY CHYKSSOUSEK CHECKED BY APPR:FSMTH DATE 2012/03/27 DATE 2012/03/30 DATE 2012/04/05	QUALITY SYMBOLS	GENERAL TOLERANCES (UNLESS SPECIFIED)	DIMENSION STYLE	SCALE	DESIGN UNITS	THIRD ANGLE PROJECTION
	▽=0	mm INCH	IN/MM	---	METRIC	☉
	▽=0	4 PLACES ± --- ± ---	DRAWN BY DATE	---	METRIC	☉
	▽=0	3 PLACES ± --- ± .010	MK IPPER 2008/01/18	---	METRIC	☉
		2 PLACES ± 0.25 ± .014	CHECKED BY DATE	---	METRIC	☉
		1 PLACE ± 0.35 ± ---	SSOUSEK 2008/01/21	---	METRIC	☉
		ANGULAR ±1/2°	APPROVED BY DATE	---	METRIC	☉
			FSMTH 2010/11/18	---	METRIC	☉
		DRAFT WHERE APPLICABLE MUST REMAIN WITHIN DIMENSIONS	MATERIAL NO.	---	METRIC	☉
			SEE CHART	---	METRIC	☉
			DOCUMENT NO.	---	METRIC	☉
			SD-43020-001	---	METRIC	☉
			SHEET NO.	---	METRIC	☉
			1 OF 1	---	METRIC	☉