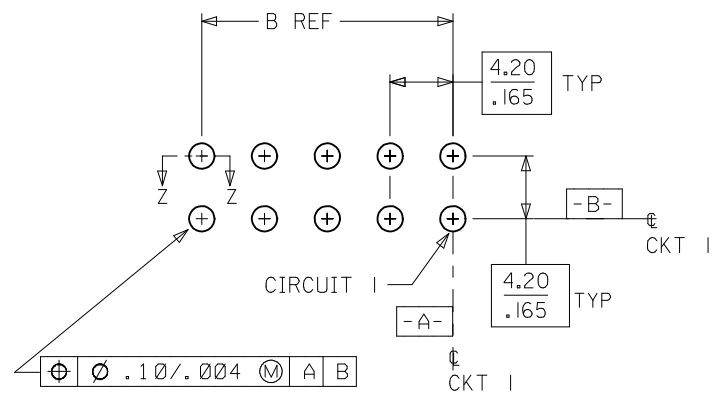
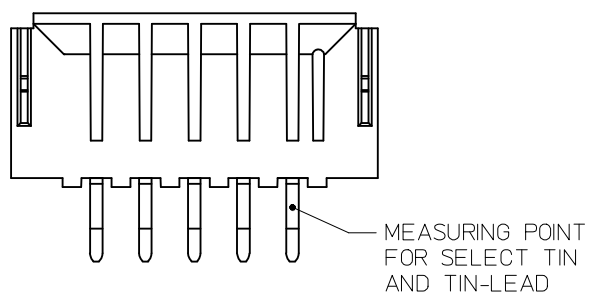
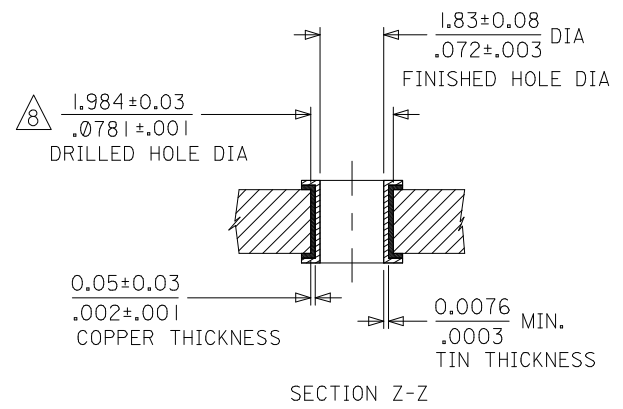
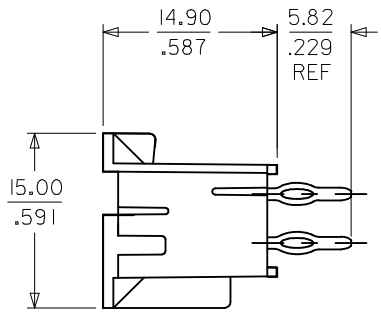
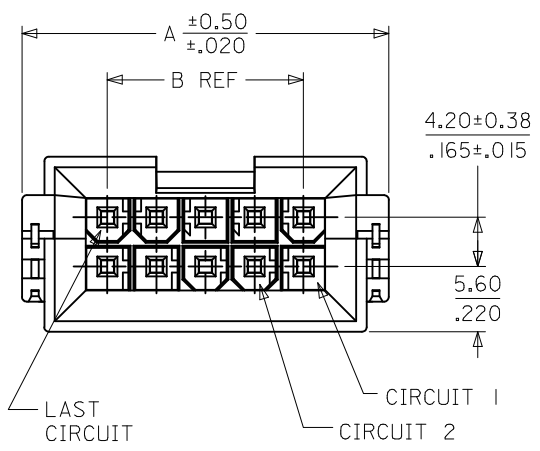


10 9 8 7 6 5 4 3 2 1



CKT	A	B
4	18.81 .740	4.20 .165
6	23.01 .906	8.40 .331
8	27.21 1.071	12.60 .496
10	31.41 1.237	16.80 .661
12	35.61 1.402	21.00 .827
14	39.81 1.567	25.20 .992
16	44.01 1.733	29.40 1.157
18	48.21 1.898	33.60 1.323
20	52.41 2.063	37.80 1.488
22	56.61 2.229	42.00 1.654
24	60.81 2.394	46.20 1.819

- NOTES:
- MATERIAL:
HOUSING: NYLON, GLASS FILLED, UL94V-0, COLOR: BLACK
TERMINAL: PHOSPHOR BRONZE
 - FINISH: SEE SHEET 2
 - PRODUCT SPECIFICATION: PS-43879-001
 - PACKAGING: PK-43879-001
 - THIS PART MATES WITH RECEPTACLE NUMBERS 5557 AND 42474
 - THIS PART MATES WITH HEADER NUMBER 42385
 - PART ALLOWS FOR 1.27/.050 MAX. MIS-ALIGNMENT WITH MATING HOUSING IN ANY DIRECTION
 - DRILLED HOLE DIAMETER IS EQUIVALENT TO 5/64 INCH STANDARD DRILL BIT
 - CONNECTOR ASSEMBLIES ARE NOT DESIGNED TO BE MATED AND UNMATED WHILE CIRCUITS ARE LIVE
 - PART IS NOT DESIGNED FOR CURRENT SHARING
 - PART CONFORMS TO CLASS "B" REQUIREMENTS OF COSMETIC SPECIFICATION PS-45499-002
 - THIS HEADER REQUIRES A MOLEX INSERTION TOOL (62200-9400) TO PROPERLY INSTALL IT TO THE PCB.

PCB LAYOUT: COMPONENT SIDE
RECOMMENDED MINIMUM PCB THICKNESS: 2.24 / .088

REMOVE OBS P/N 'S EC NO: UCP2013-2144 DRWN:BBEE 2012/11/29 CHKD:JBELL 2012/11/29 APPR:FSMITH 2012/12/03 L3 REV	DESCRIPTION QUALITY SYMBOLS ▽=0 ▽=0 ▽=0	GENERAL TOLERANCES (UNLESS SPECIFIED) mm INCH		DIMENSION STYLE MM/IN		SCALE 2:1	DESIGN UNITS METRIC	THIRD ANGLE PROJECTION			
		4 PLACES ± --- ± ---	3 PLACES ± --- ± .010	2 PLACES ± 0.25 ± .014	1 PLACE ± 0.35 ± ---	0 PLACE ± --- ± ---	DRAWN BY MANLAPAZ	DATE 1998/04/08	TITLE MINI-FIT JR BMI/CPI HEADER ASSEMBLY		
		ANGULAR ± 1/2° DRAFT WHERE APPLICABLE MUST REMAIN WITHIN DIMENSIONS					CHECKED BY BANDURA	DATE 1998/04/08	molex		
							APPROVED BY FSMITH	DATE 2012/12/03	MATERIAL NO. SEE SHEET 2		DOCUMENT NO. SD-43879-021

THIS DRAWING CONTAINS INFORMATION THAT IS PROPRIETARY TO MOLEX INCORPORATED AND SHOULD NOT BE USED WITHOUT WRITTEN PERMISSION

9 8 7 6 5 4 3 2 1

10 9 8 7 6 5 4 3 2 1

FINISH: 1 TIN OVER NICKEL	
CKTS	MATERIAL NO.
04	43879-0022
06	43879-0023
08	NOT TOOLED
10	43879-0025
12	NOT TOOLED
14	43879-0027
16	NOT TOOLED
18	43879-0029
20	NOT TOOLED
22	NOT TOOLED
24	43879-0032

FINISH: 4 GOLD & TIN OVER NICKEL	
CKTS	MATERIAL NO.
04	43879-0055
06	43879-0056
08	NOT TOOLED
10	43879-0058
12	NOT TOOLED
14	43879-0060
16	NOT TOOLED
18	43879-0062
20	NOT TOOLED
22	NOT TOOLED
24	43879-0065

FINISH:

1 - 0.00254/.000100 MIN. BRIGHT TIN OVER 0.00127/.000050 MIN. NICKEL OVERALL.

4 - 0.00076/.000030 MIN. GOLD IN CONTACT AREA, 0.00254/.000100 MIN. MATTE TIN IN TAIL AREA, OVER 0.00127/.000050 MIN. NICKEL OVERALL.

SEE SHEET ONE EC NO: UCP2013-2144 DRW:BBEE 2012/11/29 CHKD:JBELL 2012/11/29 APPR:FSM:TH 2012/12/03	DESCRIPTION REV	QUALITY SYMBOLS	GENERAL TOLERANCES (UNLESS SPECIFIED)	DIMENSION STYLE	SCALE	DESIGN UNITS	THIRD ANGLE PROJECTION
		$\nabla = 0$ $\nabla = 0$ $\nabla = 0$	mm INCH 4 PLACES ± --- ± --- 3 PLACES ± --- ± .010 2 PLACES ± 0.25 ± .014 1 PLACE ± 0.35 ± --- 0 PLACE ± --- ± ---	MM/IN	1:1	METRIC	MINI-FIT JR BMI/CPI HEADER ASSEMBLY
			ANGULAR ± 1/2° DRAFT WHERE APPLICABLE MUST REMAIN WITHIN DIMENSIONS	DRAWN BY DATE MANLAPAZ 1998/04/08 CHECKED BY DATE BANDURA 1998/04/08 APPROVED BY DATE FSM:TH 2012/12/03	TITLE		
		L3			MATERIAL NO. SEE CHART SIZE B	DOCUMENT NO. SD-43879-021	SHEET NO. 2 OF 2

9 8 7 6 5 4 3 2 1