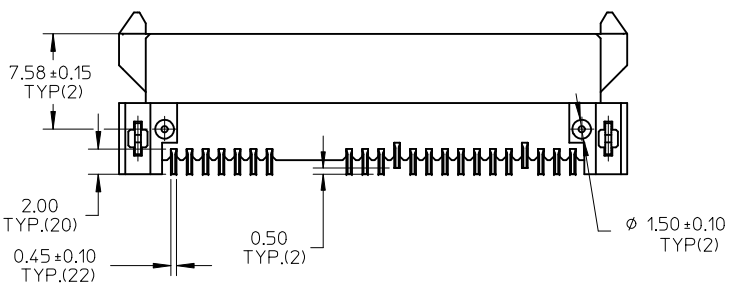


Detail1

NOTES:

- 1.MATERIAL:
  - HOUSING: THERMAL PLASTIC, GLASS FILLED, UL94V-0. COLOR: BLACK;
  - FORKLOCK: COPPER ALLOY;
  - TERMINALS: COPPER ALLOY.
- 2.TERMINAL PLATING:
  - CONTACT AREA:
    - (a) GOLD FLASH(0.025 MICRONS MINIMUM);
    - (b) GOLD, THICKNESS=0.76 MICRONS MINIMUM;
    - (c) GOLD, THICKNESS=0.38 MICRONS MINIMUM;
  - SOLDER AREA: TIN, THICKNESS=2.00 MICRONS MINIMUM;
  - UNDER PLATE: NICKEL, THICKNESS=1.27 MICRONS MINIMUM.
- 3.FORLOCK PLATING:
  - SOLDER AREA: TIN, THICKNESS=2.00 MICRONS MINIMUM;
  - UNDER PLATING: NICKEL, THICKNESS=1.27 MICRONS MINIMUM.
- 4.PRODUCT SPECIFICATION: PS-67492-001.
- 5.PACKAGING METHOD: 47018-400\*, TAPE REEL, DETAIL REFER TO PK-47018-003; 47018-210\*, TAPE REEL, DETAIL REFER TO PK-47018-001; OTHERS, TRAY, DETAIL REFER TO PK-67492-001.
- 6.MATING PARTS: 87703/87672.
- 7.PRODUCT COMPLIANT TO RoSH DIRECTIVE 2002/95/EC AND 2000/53/EC.

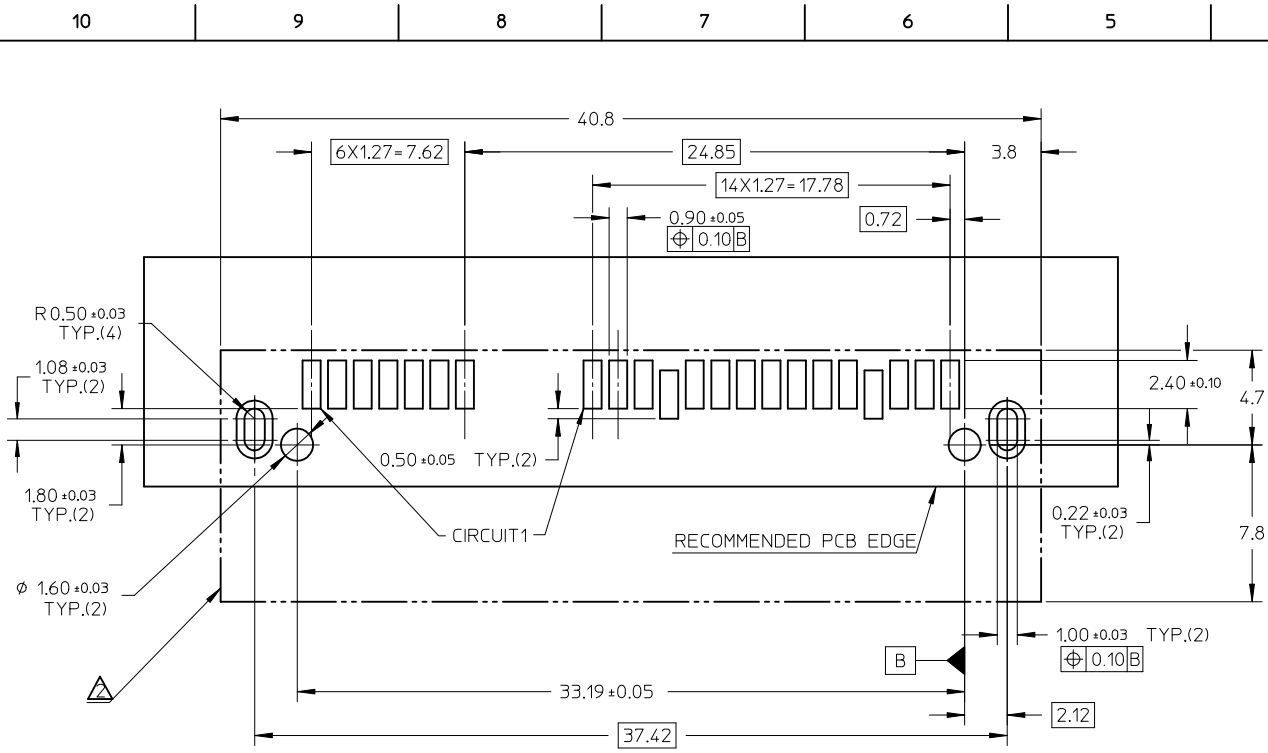


REVISED EC NO: SH2012-0284 DRWG: GLLI CHKD: APPR: AYIN REV	2012/02/29 2012/03/13	QUALITY SYMBOLS $F_A=0$ $F_C=0$ $F_B=0$	GENERAL TOLERANCES (UNLESS SPECIFIED)		DIMENSION STYLE <b>MM ONLY</b>	SCALE <b>2:1</b>	DESIGN UNITS <b>METRIC</b>	THIRD ANGLE PROJECTION		
			mm	INCH	DRAWN BY GLLI	DATE 2011/12/12	SERIAL ATA DOCKING CONNECTOR TOP MOUNT TYPE <b>MOLEX</b> MOLEX INCORPORATED			
			4 PLACES ± --- ± ---	3 PLACES ± --- ± ---	CHECKED BY	DATE				
			2 PLACES ± 0.25 ± ---	1 PLACE ± 0.25 ± ---	APPROVED BY XJSONG		DATE 2011/12/12	DOCUMENT NO. <b>SD-47018-001</b>	SHEET NO. 1 OF 2	

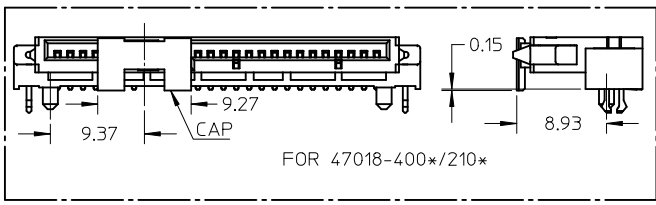
DRAFT WHERE APPLICABLE MUST REMAIN WITHIN DIMENSIONS

SEE SHEET 2

THIS DRAWING CONTAINS INFORMATION THAT IS PROPRIETARY TO MOLEX INCORPORATED AND SHOULD NOT BE USED WITHOUT WRITTEN PERMISSION



RECOMMENDED P.C.B LAYOUT (COMPONENT SIDE)



NOTES:

1. RECOMMENDED P.C.B THICKNESS: 1.60+/-0.05.
- △ CONNECTOR PROFILE, ALL THE TRACE SHOULD BE AVOIDED THIS AREA.

PRODUCT	CONTACT PLATING SPEC	DIM'A	DIM'B	DIM'C	DIM'D	PACKAGE	REMARK
47018-2100	NOTES 2 (A) OF SHEET 1						PURE TIN
47018-2101	NOTES 2 (B) OF SHEET 1	2.55	4.30	9.65	3.65	TAPE REEL	(LIGHT TIN)
47018-2102	NOTES 2 (C) OF SHEET 1						WITH CAP
47018-4000	NOTES 2 (A) OF SHEET 1						PURE TIN
47018-4001	NOTES 2 (B) OF SHEET 1	3.40	5.15	10.50	4.50	TAPE REEL	(LIGHT TIN)
47018-4002	NOTES 2 (C) OF SHEET 1						WITH CAP
47018-2010	NOTES 2 (A) OF SHEET 1						PURE TIN
47018-2011	NOTES 2 (B) OF SHEET 1	2.55	4.30	9.65	3.65	TRAY	(MATTE TIN)
47018-2012	NOTES 2 (C) OF SHEET 1						
47018-2000	NOTES 2 (A) OF SHEET 1						PURE TIN
47018-2001	NOTES 2 (B) OF SHEET 1	2.55	4.30	9.65	3.65	TRAY	(LIGHT TIN)
47018-2002	NOTES 2 (C) OF SHEET 1						

REVISED EC NO: SH2012-0284 DRWING: GLL1 CHKD: APPR: AYIN	2012/02/29 2012/03/13	DESCRIPTION REV	QUALITY SYMBOLS	GENERAL TOLERANCES (UNLESS SPECIFIED)	DIMENSION STYLE	SCALE	DESIGN UNITS	THIRD ANGLE PROJECTION																												
			$\nabla_F = 0$ $\nabla_{F'} = 0$ $\nabla_{F''} = 0$	<table border="1"> <tr> <th></th> <th>mm</th> <th>INCH</th> </tr> <tr> <td>4 PLACES</td> <td>± ---</td> <td>± ---</td> </tr> <tr> <td>3 PLACES</td> <td>± ---</td> <td>± ---</td> </tr> <tr> <td>2 PLACES</td> <td>± 0.25</td> <td>± ---</td> </tr> <tr> <td>1 PLACE</td> <td>± 0.25</td> <td>± ---</td> </tr> </table>		mm	INCH	4 PLACES	± ---	± ---	3 PLACES	± ---	± ---	2 PLACES	± 0.25	± ---	1 PLACE	± 0.25	± ---	MM ONLY	1:1	METRIC														
				mm	INCH																															
			4 PLACES	± ---	± ---																															
3 PLACES	± ---	± ---																																		
2 PLACES	± 0.25	± ---																																		
1 PLACE	± 0.25	± ---																																		
	<table border="1"> <tr> <th></th> <th>mm</th> <th>INCH</th> </tr> <tr> <td>4 PLACES</td> <td>± ---</td> <td>± ---</td> </tr> <tr> <td>3 PLACES</td> <td>± ---</td> <td>± ---</td> </tr> <tr> <td>2 PLACES</td> <td>± 0.25</td> <td>± ---</td> </tr> <tr> <td>1 PLACE</td> <td>± 0.25</td> <td>± ---</td> </tr> </table>		mm	INCH	4 PLACES	± ---	± ---	3 PLACES	± ---	± ---	2 PLACES	± 0.25	± ---	1 PLACE	± 0.25	± ---	<table border="1"> <tr> <td>DRAWN BY</td> <td>DATE</td> <td>TITLE</td> </tr> <tr> <td>GLL1</td> <td>2011/12/12</td> <td rowspan="2">SERIAL ATA DOCKING CONNECTOR TOP MOUNT TYPE</td> </tr> <tr> <td>CHECKED BY</td> <td>DATE</td> </tr> <tr> <td>APPROVED BY</td> <td>DATE</td> <td rowspan="2">MOLEX INCORPORATED</td> </tr> <tr> <td>XJSONG</td> <td>2011/12/12</td> </tr> <tr> <td>MATERIAL NO.</td> <td>DOCUMENT NO.</td> <td>SHEET NO.</td> </tr> <tr> <td>SEE TABLE</td> <td>SD-47018-001</td> <td>2 OF 2</td> </tr> </table>	DRAWN BY	DATE	TITLE	GLL1	2011/12/12	SERIAL ATA DOCKING CONNECTOR TOP MOUNT TYPE	CHECKED BY	DATE	APPROVED BY	DATE	MOLEX INCORPORATED	XJSONG	2011/12/12	MATERIAL NO.	DOCUMENT NO.	SHEET NO.	SEE TABLE	SD-47018-001	2 OF 2
	mm	INCH																																		
4 PLACES	± ---	± ---																																		
3 PLACES	± ---	± ---																																		
2 PLACES	± 0.25	± ---																																		
1 PLACE	± 0.25	± ---																																		
DRAWN BY	DATE	TITLE																																		
GLL1	2011/12/12	SERIAL ATA DOCKING CONNECTOR TOP MOUNT TYPE																																		
CHECKED BY	DATE																																			
APPROVED BY	DATE	MOLEX INCORPORATED																																		
XJSONG	2011/12/12																																			
MATERIAL NO.	DOCUMENT NO.	SHEET NO.																																		
SEE TABLE	SD-47018-001	2 OF 2																																		
DRAFT WHERE APPLICABLE MUST REMAIN WITHIN DIMENSIONS				THIS DRAWING CONTAINS INFORMATION THAT IS PROPRIETARY TO MOLEX INCORPORATED AND SHOULD NOT BE USED WITHOUT WRITTEN PERMISSION																																