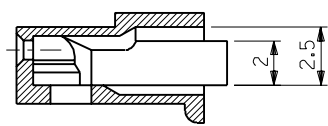
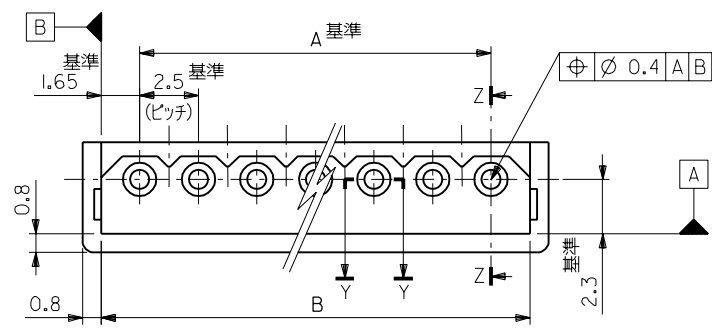
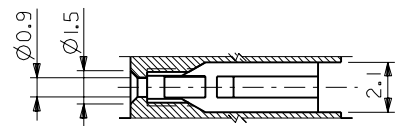


EDP NO. 50-37-5**3 SD-5264-N
 ENG. NO.
 :MM DIMENSIONS IN METRIC DO NOT SCALE DRAWING



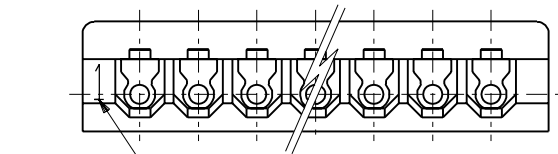
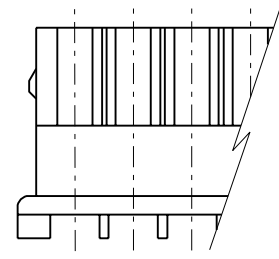
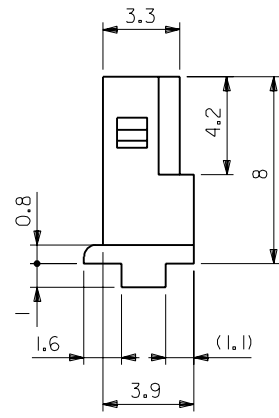
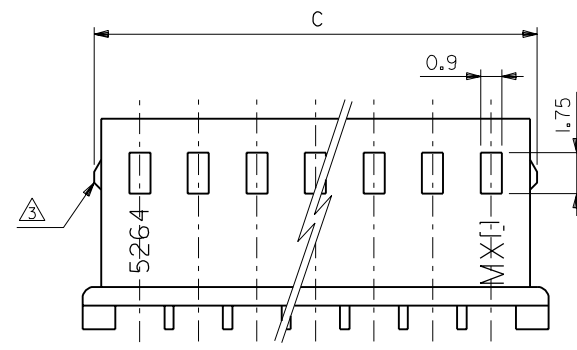
断面 Z-Z



断面 Y-Y

注記:

- 適合端子: 5263PBT
- 嵌合相手: 5267 シリーズ, 5268 シリーズ
- △ 9極以上はロックなし。



CIRCUIT NO.

	38.3	35	50-37-5153	5264-15	15
	35.8	32.5	↑ -5143	↑ -14	14
	33.3	30	↑ -5133	↑ -13	13
	30.8	27.5	↑ -5123	↑ -12	12
	28.3	25	↑ -5113	↑ -11	11
	25.8	22.5	↑ -5103	↑ -10	10
	23.3	20	↑ -5093	↑ -09	9
	21.4	20.8	↑ -5083	↑ -08	8
	18.9	18.3	↑ -5073	↑ -07	7
	16.4	15.8	↑ -5063	↑ -06	6
	13.9	13.3	↑ -5053	↑ -05	5
	11.4	10.8	↑ -5043	↑ -04	4
	8.9	8.3	↑ -5033	↑ -03	3
	6.4	5.8	↑ -5023	↑ -02	2
C	B	A	EDP NO.	ENG.NO.	極数

角度 ANGLE		±3°						材料 MATERIAL	66ナイロン UL94V-0		MOLEX JAPAN CO., LTD. 日本モレックス株式会社	
30以上 OVER		+0.3						仕上げ FINISH	— / —			EDP. NO.
10以上 30未滿 UNDER		+0.25	H	再作図及び変更	U10590	K-1	9/17/26	適用電線範囲 WIRE RANGE	— / —		ENG. NO.	
10未滿 UNDER		+0.2	記号 LTR	変更内容 REVISION RECORD	DR. CHK. DATE			被覆外径 INS. RANGE	— / —		REV	
一般公差 GENERAL TOLERANCES			REVISE ONLY ON CAD SYSTEM					DRAWN BY	CHK'D BY	TITLE 名称		
								K.TOJO '91/7/26	M.FUKUSHIMA	2.5 LOW PROFILE RECEPTACLE HOUSING		
								APP'D BY	M.ENOMOTO	尺 度 SCALE		H
										5-1		

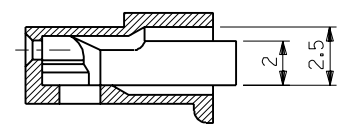
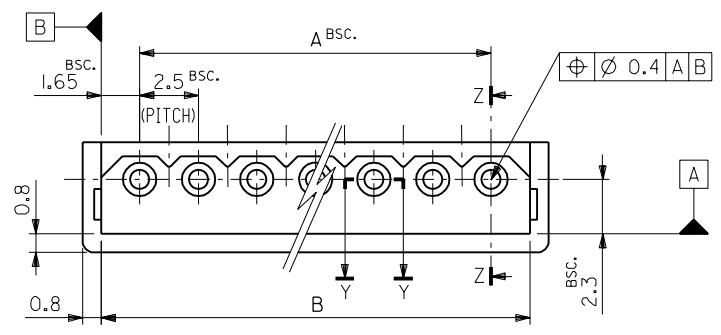
THIS DRAWING CONTAINS INFORMATION THAT IS PROPRIETARY TO MOLEX(JAPAN) AND SHOULD NOT BE USED WITHOUT WRITTEN PERMISSION
 本図面は日本モレックス(株)の所有する情報を含むもので 当社の許可なく複製を禁止する。

MXJ-8

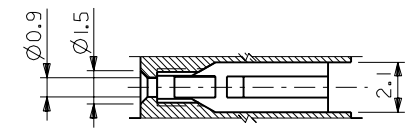
5264-530

EDP NO. 50-37-5**3
 ENG. NO. SD-5264-N

MM DIMENSIONS IN METRIC DO NOT SCALE DRAWING



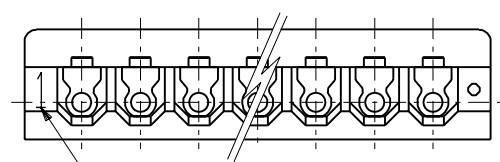
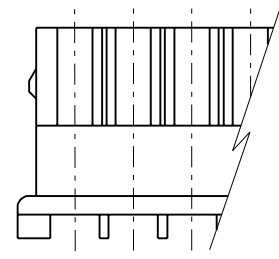
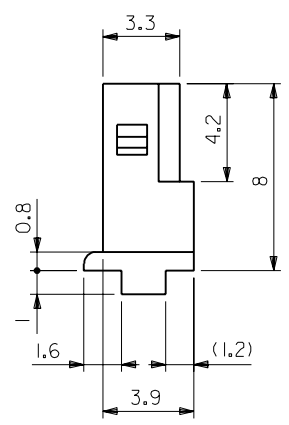
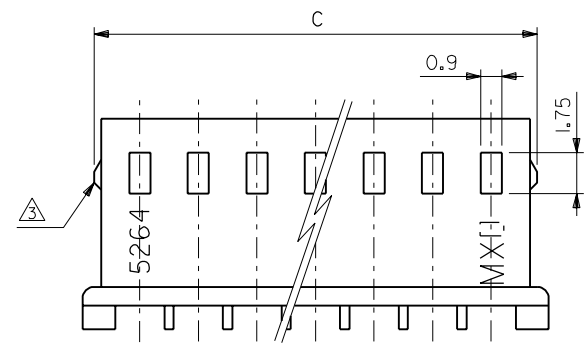
SECT.Z-Z



SECT.Y-Y

NOTES:

- 1. SUITABLE TERMINAL : 5263SERIES
- 2. MATES WITH : 5267SERIES,5268SERIES
- △ 9 CIRCUITS OR MORE WITHOUT LOOK.



CIRCUIT NO.

	50.8	47.5	50-37-5203	5264-20	20	
	48.3	45	-5193	-19	19	
	45.8	42.5	-5183	-18	18	
	43.3	40	-5173	-17	17	
	40.8	37.5	-5163	-16	16	
	38.3	35	-5153	-15	15	
	35.8	32.5	-5143	-14	14	
	33.3	30	-5133	-13	13	
	30.8	27.5	-5123	-12	12	
	28.3	25	-5113	-11	11	
	25.8	22.5	-5103	-10	10	
	23.3	20	-5093	-09	9	
	21.4	20.8	17.5	-5083	-08	8
	18.9	18.3	15	-5073	-07	7
	16.4	15.8	12.5	-5063	-06	6
	13.9	13.3	10	-5053	-05	5
	11.4	10.8	7.5	-5043	-04	4
	8.9	8.3	5	-5033	-03	3
	6.4	5.8	2.5	50-37-5023	5264-02	2
	C	B	A	EDP NO.	ENG.NO.	CKT.

角度 ANGLE	±3°						
30以上 OVER	+0.3						
10以上 30未滿 UNDER	+0.25	H	REVISED & REDRAWN (J105910)	K.T.	H.A.	9/11/15	
10未滿 UNDER	+0.2		記号 LTR 変更内容 REVISION RECORD	DR. CHK.	日付 DATE		
一般公差 GENERAL TOLERANCES		REVISE ONLY ON CAD SYSTEM					

材料 MATERIAL	66NYLON,UL94V-0	MOLEX-JAPAN CO.,LTD. 日本モレックス株式会社
仕上げ FINISH	—	
適用電線範囲 WIRE RANGE	—	EDP. NO. 50-37-5**3
被覆外径 INS. RANGE	—	ENG. NO. SD-5264-N
DRAWN BY K.TOJO '91/11/5	CHK'D BY '92/01/5 M.FUKUSHIMA	TITLE 名称 2.5 LOW PROFILE RECEPTACLE HOUSING
APP'D BY '92/01/5 M.ENOMOTO	尺度 SCALE 5-1	REV H

THIS DRAWING CONTAINS INFORMATION THAT IS PROPRIETARY TO MOLEX(JAPAN) AND SHOULD NOT BE USED WITHOUT WRITTEN PERMISSION
 本図面は日本モレックス(株)の所有する情報を含むもので 当社の許可なく複製を禁止する。

MXJ-8