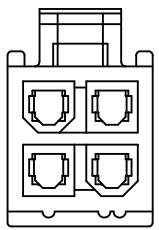


PART NUMBER	ENG. NUMBER	MATERIAL (SEE NOTE 1)
39-01-3028	5557-02R1-210	94V-0
39-01-3048	5557-04R1-210	94V-0
39-01-3022	5557-02R1	94V-2
39-01-3042	5557-04R1	94V-2
15-04-6021	5557-02R1-220	94V-2, U.V. STABLE
46999-0273	5557-04R1-220	94V-2, U.V. STABLE
39-01-6026	5557-02R1-BL	94V-2, BLACK
NO E.D.P.	5557-04R1-BL	94V-2, BLACK

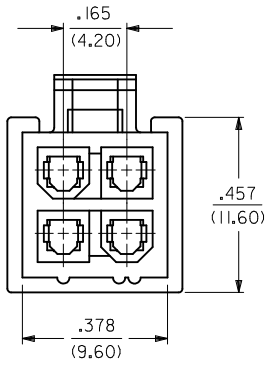
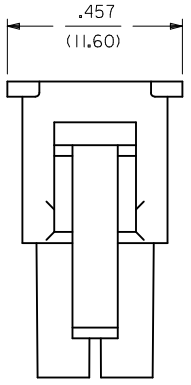
LEGEND:

5557-* R1-*****

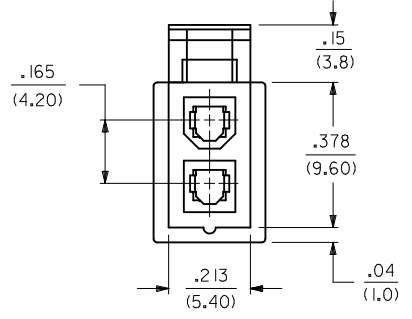
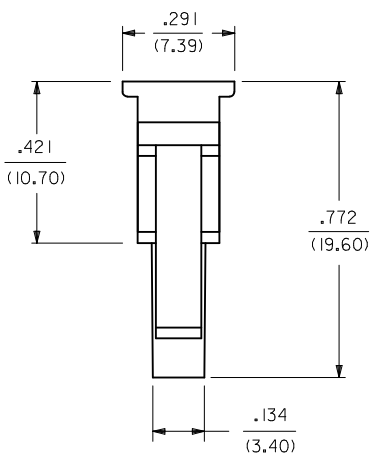
BASE NUMBER
 CKT. SIZE
 RECEPTACLE
 (WITH SIDE PULL TABS)
 MATERIAL OPTION:
 (SEE NOTE 1)



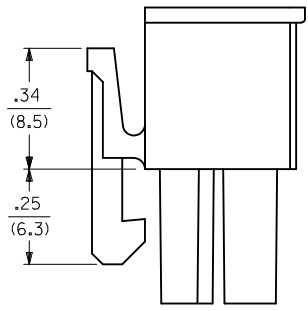
5557-04R-**
 (WITHOUT SIDE PULL TABS)
 (SHOWN FOR REFERENCE ONLY)



5557-04R1-**



5557-02R1-**



5557-02R-**
 (WITHOUT SIDE PULL TABS)
 (SHOWN FOR REFERENCE ONLY)

- NOTES:**
- MATERIAL:
 BLANK = NYLON 6/6, U.L. 94V-2. COLOR: NATURAL.
 210 = NYLON 6/6, U.L. 94V-0. COLOR: NATURAL.
 220 = NYLON 6/6, U.L. 94V-2, U.V. STABILIZED. COLOR: BLACK.
 BL = NYLON 6/6, U.L. 94V-2. COLOR: BLACK.
 - FINISH: NOT APPLICABLE
 - PRODUCT SPECIFICATION: PS-5556-001.
 - PARTS TO BE PACKAGED PER PK-5557-002
 - PART MATES WITH MOLEX PLUG *5559.
 - PART IS FOR USE WITH MOLEX FEMALE TERMINAL *5556.
 - PART IS NOT DESIGNED FOR CURRENT SHARING.
 - CONNECTORS ARE NOT TO BE MATED OR UNMATED WHILE CIRCUITS ARE LIVE.
 - WIRES ARE TO BE DRESSED IN SUCH A MANNER TO ALLOW THE TERMINALS TO FLOAT FREELY IN THE POCKET.
 - PART CONFORMS TO CLASS *B* REQUIREMENTS OF COSMETIC SPECIFICATION PS-45499-002

CORRECT TITLE BLOCK IEC NO: UCP2012-2990 DRWING: NGUYEN 2012/03/28 CHKD: BELL 2012/03/28 APPR: FSMITH 2012/05/04 REV: G3	QUALITY SYMBOLS 	GENERAL TOLERANCES (UNLESS SPECIFIED) <table border="1"> <thead> <tr> <th></th> <th>mm</th> <th>INCH</th> </tr> </thead> <tbody> <tr> <td>4 PLACES</td> <td>± .15</td> <td>± .005</td> </tr> <tr> <td>3 PLACES</td> <td>± .10</td> <td>± .004</td> </tr> <tr> <td>2 PLACES</td> <td>± .08</td> <td>± .003</td> </tr> <tr> <td>1 PLACE</td> <td>± .05</td> <td>± .002</td> </tr> <tr> <td>0 PLACE</td> <td>± .03</td> <td>± .001</td> </tr> </tbody> </table>		mm	INCH	4 PLACES	± .15	± .005	3 PLACES	± .10	± .004	2 PLACES	± .08	± .003	1 PLACE	± .05	± .002	0 PLACE	± .03	± .001	DIMENSION STYLE IN/MM DRAWN BY: GEP DATE: 1990/08/08 CHECKED BY: RJF DATE: APPROVED BY: FSMITH DATE: 2012/05/04	SCALE: 4:1 DESIGN UNITS: METRIC THIRD ANGLE PROJECTION
		mm	INCH																			
	4 PLACES	± .15	± .005																			
	3 PLACES	± .10	± .004																			
2 PLACES	± .08	± .003																				
1 PLACE	± .05	± .002																				
0 PLACE	± .03	± .001																				
DRAFT WHERE APPLICABLE MUST REMAIN WITHIN DIMENSIONS		MATERIAL NO.: SEE CHART DOCUMENT NO.: SD-5557-***R1-*	SHEET NO.: 1 OF 1																			
THIS DRAWING CONTAINS INFORMATION THAT IS PROPRIETARY TO MOLEX INCORPORATED AND SHOULD NOT BE USED WITHOUT WRITTEN PERMISSION																						