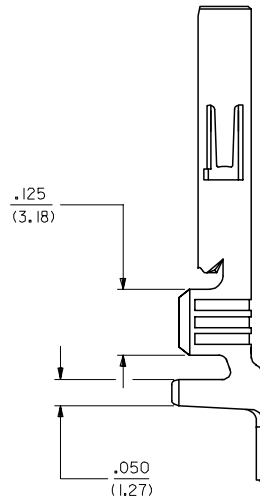
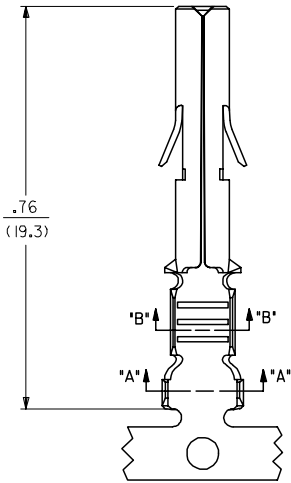
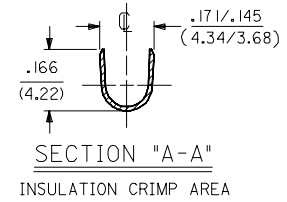
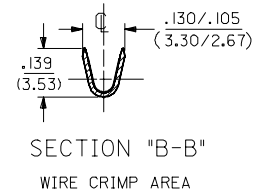
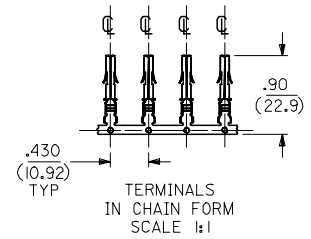
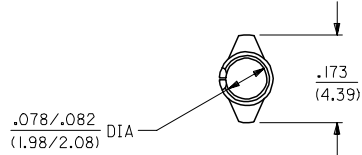


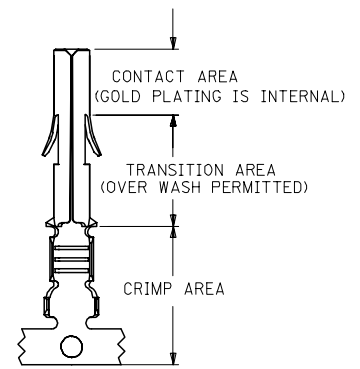
SOCKET TERMINAL
42024-***



SEE SHEET 2 FOR CHART, MATERIAL, PLATING, NOTES, AND CRIMP OPTIONS

ENTER DESCRIPTION EC NO.: 10005-0017 DRWN: SUDHIR 2004/09/27 CHKD: KPRASAD 2004/09/27 APPR: SUDHIR 2004/09/27	QUALITY SYMBOLS ANGLUAR ±1/2°	GENERAL TOLERANCES (UNLESS SPECIFIED)		DIMENSION STYLE IN/MM	SCALE 4:1	DESIGN UNITS INCH	THIRD ANGLE PROJECTION	
		4 PLACES ± --- ± ---	DRAWN BY SUDHIR	DATE 2004/09/27	TITLE RMINAL, SOCKET 84/(2.13) DIA. SERIES			
		3 PLACES ± --- ± .010	CHECKED BY KPRASAD	DATE 2004/09/27	MOLEX INCORPORATED			
		2 PLACES ± 0.25 ± .015 1 PLACE ± 0.38 ± ---	APPROVED BY KPRASAD	DATE 2004/09/27	MATERIAL NO. SEE CHART	DOCUMENT NO. SD-42024-****	SHEET NO. 1 OF 2	
DRAFT WHERE APPLICABLE MUST REMAIN WITHIN DIMENSIONS		THIS DRAWING CONTAINS INFORMATION THAT IS PROPRIETARY TO MOLEX INCORPORATED AND SHOULD NOT BE USED WITHOUT WRITTEN PERMISSION						

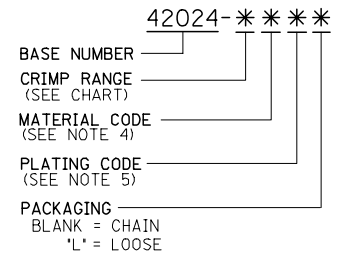
ENG. NO.	EDP NO.	FINISH (REF)	CONTACT AREA (REF)	CRIMP AREA (REF)	MATERIAL (REF)	WIRE SIZE	INSULATION DIA.
42024-IAI	002-08-1001	SDES-88-P90I	----	----	C26000	#14-#20 AWG	.060-.130
42024-IAL	002-08-1002	SDES-88-P90I	----	----	C26000	#14-#20 AWG	.060-.130
42024-IBI	002-08-1003	SDES-88-P90I	----	----	C51000	#14-#20 AWG	.060-.130
42024-IBL	002-08-1004	SDES-88-P90I	----	----	C51000	#14-#20 AWG	.060-.130
42024-IA2	002-08-1005	SEE NOTE 5	.000030 MIN GOLD	.000100 MIN MATTE TIN	C26000	#14-#20 AWG	.060-.130
42024-IA2L	002-08-1006	SEE NOTE 5	.000030 MIN GOLD	.000100 MIN MATTE TIN	C26000	#14-#20 AWG	.060-.130
42024-IB2	002-08-1007	SEE NOTE 5	.000030 MIN GOLD	.000100 MIN MATTE TIN	C51000	#14-#20 AWG	.060-.130
42024-IB2L	002-08-1008	SEE NOTE 5	.000030 MIN GOLD	.000100 MIN MATTE TIN	C51000	#14-#20 AWG	.060-.130



PLATING REGIONS
 APPLIES TO GOLD PLATED TERMINALS ONLY

- NOTES:**
- SOCKET TERMINALS FOR USE WITH THE .084/(2.13) SERIES HOUSINGS:
 PLUG (42021-**) CAP (42022-**)
 - SOCKET TERMINALS MATE WITH PIN TERMINALS: .084/(2.13) DIA. SERIES (42023-****).
 - TERMINALS FINISHED IN CHAIN UNLESS SPECIFIED LOOSE. 'L' SUFFIX INDICATES LOOSE FORM. (SEE TABLE)
 - MATERIAL: .012/(0.30) THICK STRIP:
 A = BRASS, *C26000, PER SMES-124-C7.
 B = PHOSPHOR BRONZE, *C51000, PER SMES-124-E7.
 - FINISH:
 1 = HOT TIN DIP 20 m.l./(.51 MICRONS) MINIMUM (PER SDES-88-P90I).
 2 = 30 (M.1) / 0.75 MICRONS) MIN SELECT GOLD AND 100 (M.1) (2.50 MICRON) MIN SELECT TIN (MATTE) OVER 50 (M.1) (1.25 MICRONS) MIN NICKEL OVERALL
 - CRIMP RANGE: SEE CHART.
 - PRODUCT SPECIFICATION PS-42022-0001 APPLIES.

LEGEND:



ENTER DESCRIPTION EC NO: 122005-0017 DRWN: SUDHIR 2004/09/27 CHKD: XPRASAD 20/09/07/07 APPR: SSB/680 20/09/07/07	QUALITY SYMBOLS	GENERAL TOLERANCES (UNLESS SPECIFIED)	DIMENSION STYLE	SCALE	DESIGN UNITS	THIRD ANGLE PROJECTION
	▽=0	mm INCH	IN/MM	---	INCH	
	▽=0	4 PLACES ± --- ± ---	DRAWN BY DATE	TITLE		
		3 PLACES ± --- ± ---	SUDHIR 2004/09/27	RMINAL, SOCKET 84/(2.13) DIA. SERIES		
	2 PLACES ± --- ± ---	CHECKED BY DATE	MATERIAL NO. DOCUMENT NO.			
	1 PLACE ± --- ± ---	XPRASAD 2004/09/27	MOLEX INCORPORATED			
	ANGULAR ± --- °	APPROVED BY DATE	SHEET NO.			
		XPRASAD 2004/09/27	2 OF 2			
			SEE CHART SD-42024-****			
			THIS DRAWING CONTAINS INFORMATION THAT IS PROPRIETARY TO MOLEX INCORPORATED AND SHOULD NOT BE USED WITHOUT WRITTEN PERMISSION			